

### GLASS ADJUSTER FOR ALUMINIUM BIFOLD DOORS

The Debar Glass Adjuster is an innovative tool that enables easy adjustment of door toe and heeling on our aluminium bifold doors by removing the need for glazing packers and therefore no deglazing and removal of beads and gaskets.

#### KEY BENEFITS

##### EASY TO USE

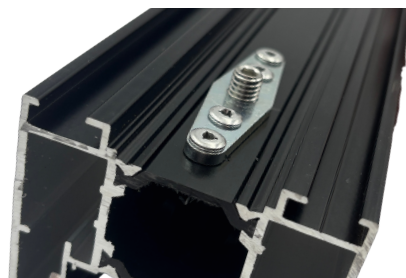
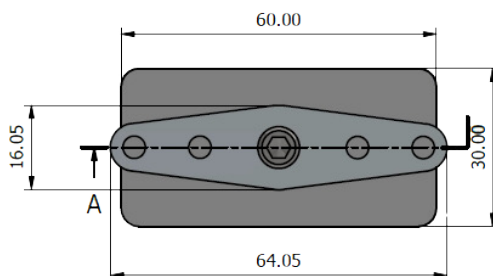
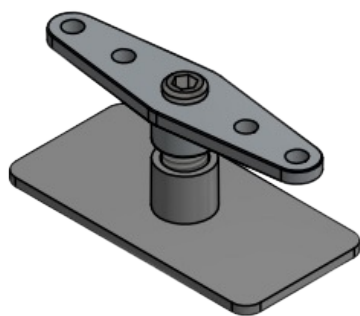
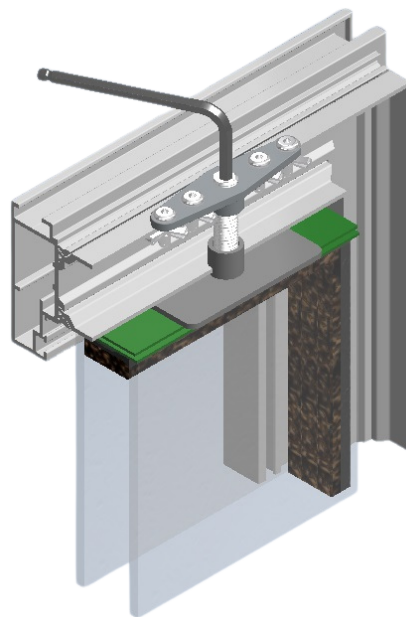
Installed during manufacturing, the glass adjuster is designed for simple straightforward adjustments

##### COST EFFECTIVE

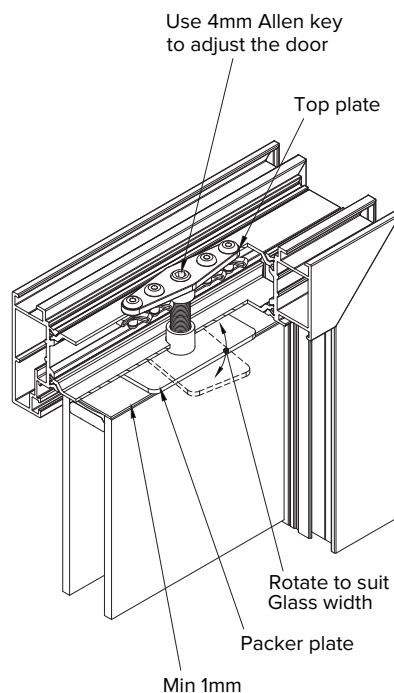
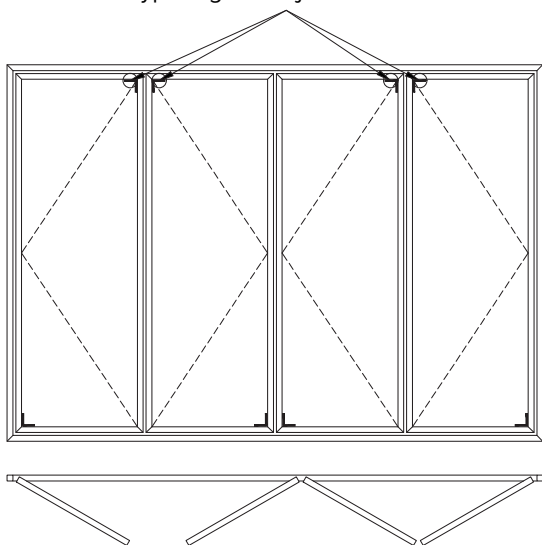
No need to pay for service engineer call outs or to rescheduled fitting teams to attend site

##### ENHANCED CUSTOMER EXPERIENCE

With simple guidance, the end users can quickly resolve alignment issues themselves by using a 4mm allen key, improving overall satisfaction



Typical glass adjuster location



**For further assistance, call 01702 899440**

**[www.alu-tec.co.uk](http://www.alu-tec.co.uk)**

Fletchers Square, Temple Farm Industrial Estate, Southend-on-Sea, Essex SS2 5RN