

ALUMINIUM FLUSH CONTEMPORARY DOOR



These new contemporary flush entrance doors combine the AluK 77ID fully rebated door profile with a collection of aluminium door panels structurally bonded to the face of the door sash.

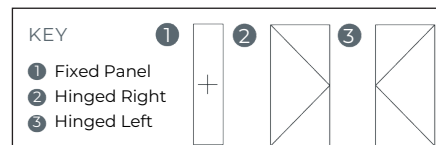
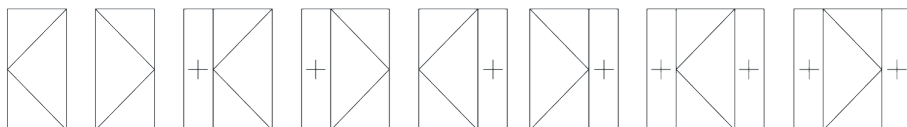
The polyamide panel design delivers exceptional long lasting performance with a maximum bowing tolerance of only 2.5mm under heat stress, meaning it won't stick regardless of the temperature outside.

Available in our standard colours of Hipca White, Anthracite Grey and Jet Black, and for a more personal finish they can be specified in any RAL finish, single or dual colour if required.

- ❖ Slim outerframe
- ❖ Thermally broken aluminium profile for improved energy efficiency
- ❖ Ultra-secure, non beaded, structurally bonded panel
- ❖ 57mm panel depth
- ❖ Max sash weight 150kg. Max sash dimensions 1200mm (w) 2400mm (h)
- ❖ Available in single and dual colour; Three premium oxide finishes also available
- ❖ Range of stainless steel hardware and security features
- ❖ Keyless entry access solutions can be specified



CONFIGURATIONS



For further assistance, call 01702 899440

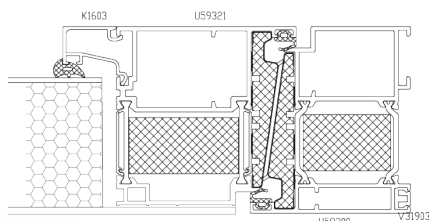
www.alu-tec.co.uk

Fletchers Square, Temple Farm Industrial Estate, Southend-on-Sea, Essex SS2 5RN

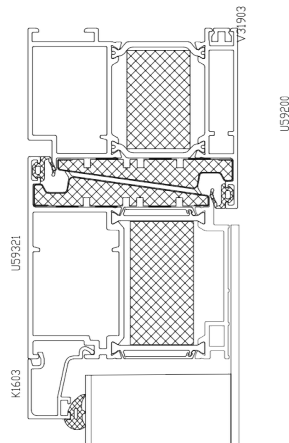
CROSS SECTION DRAWINGS



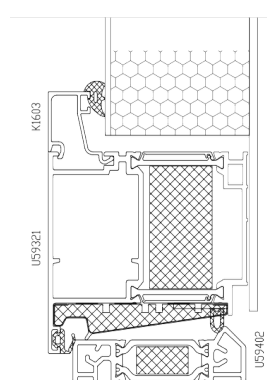
Jamb Detail:



Head Detail:



Threshold Detail:



PANEL DESIGNS



ANGOLA



BALI (4 tailed)



BORNEO



JAVA



KULON



KULON (grooved)



MALAWI



MOWSAMBIQUE (tailed)



NAKURU



SAVANNAH (5 tailed)



SUMATRA



TANZANIA

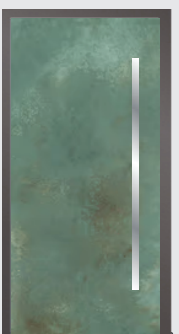
PREMIUM OXIDE RANGE



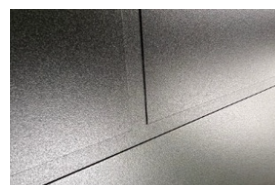
BRUNO



NERO



VERDERAME



GROOVED FINISH



TAILED FINISH

For further assistance, call 01702 899440

www.alu-tec.co.uk

Fletchers Square, Temple Farm Industrial Estate, Southend-on-Sea, Essex SS2 5RN