

S140 INLINE SLIDING DOOR

The perfect addition for homes of any size, from modern city centre balconies to opening out onto countryside vistas.



ALUK[®]
Home

LET LIFE SIMPLY SLIDE

Enjoy large expanses of light with our smooth operation, all aluminium S140 Sliding door range. It makes the perfect addition for homes of any size, from modern city centre balconies to opening out onto countryside vistas. The S140 sliding door is the perfect addition to any home looking to let natural light flood in.

STAY ON TRACK

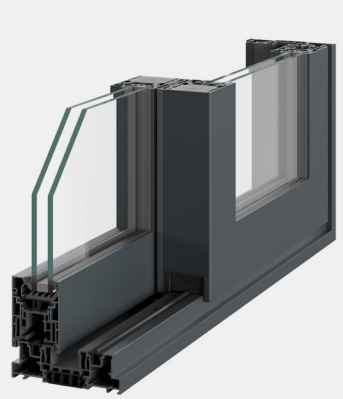
Create your slider your way with our wide range of frame and sliding styles, including track, panel and glazing options. And make a real statement with our AluK Collection, specifically designed to bring you the latest in colour and textured finishes that give your home that extra level of personalisation.

SAFE AND SOUND

Made to withstand the worst of the British weather as well as boasting concealed locks and security hardware for extra peace of mind.

THE FINER DETAILS

Frame style



Configurations

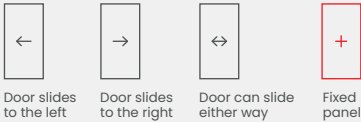
DUAL RAIL



TRI RAIL



KEY



These are examples of popular door configurations, though many more are possible.

* Performance data based on CEN size for Building Regulations. For full test performance details please contact Technical Services. AluK recommends checking all system performance for any scheme prior to use. The maximum height of 3136mm, DOES NOT consider wind loading or glass weights which would need to be checked on each door setup of this size. i.e., if the glass weight is greater than 400 Kg's or the wind load above the interlock inertia values required, the height of the door would need to be reduced to accommodate these limits.

Technical data	S140
U-value (double glazing)	1.3 W/m²K
U-value (triple glazing)	1.1 W/m²K
Air Permeability	Class 4 (600 Pa)
Water Tightness	Class 6A (250 Pa)
Wind Resistance	Class 3A (1200Pa)
Max Outer Frame W x H: Double rail	4982mm x 3100mm*
Max Outer Frame W x H: Triple rail	6600mm x 3100mm*

*Note: All maximum sizes should be checked against wind load and glass weights. Please contact ALUK's technical department for further assistance on sizes and limitations.