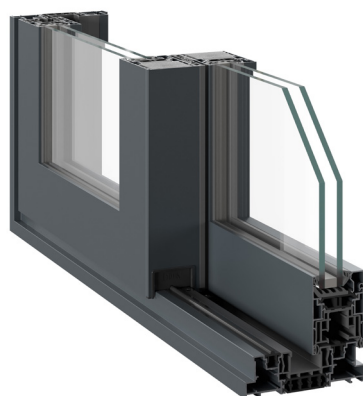


S140

Inline Sliding Door



Modern, versatile and customisable, the S140 Inline Sliding Door combines high performance with contemporary design to provide a reliable aluminium door system for almost any architectural project. Manufactured to the highest UK standards, this multi-configuration system can achieve Thermal U-Values of 1.1W/m²K (Triple glazed) and 1.3W/m²K (Double glazed).

In addition to dual and triple rail options, a comprehensive range of colours and anodised finishes are available for the system.

DESIGN FEATURES

- › Doc L compliant U-values for refurbishment & new build properties.
- › Slimline outer frame with flush frame-sash sight line
- › 2-part triple track profile for ease of fabrication & installation
- › Accepts 28mm – 48mm glazing
- › Max 400kg panel weight
- › Adjustable roller wheels

OPTIONS

- › Soft closer option available
- › Multiple sliding configurations
- › Dual or Tri rail options
- › Available in single and dual colour
Anodised finishes also available
- › Range of hardware and security features

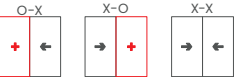
SPECIFICATIONS

Performance* and accreditations	S140
U-value (double glazing) (Dual rail)	1.3 W/m²K
U-value (triple glazing) (Dual Rail)	1.1 W/m²K
Air Permeability (Pa)	Class 4 (600 Pa)
Water tightness (Pa)	Class 6A (250 Pa)
Wind Resistance (Pa)	Class 3A (1200Pa)
System	
Depth	140 – 217.5mm
Configurations	
Dual Rail	✓
Tri Rail	✓
Size and weight limits	
Max Outer Frame W x H: Double Rail	4982mm x 3100mm*
Max Outer Frame W x H: Triple Rail	6600mm x 3100mm*
Max Vent W x H: Double Rail	2500mm x 3029mm*
Max Vent W x H: Triple Rail	2257mm x 3029mm*
Max Vent Weight	400kg
Glazing	
Glazing Options	Internal
Glazing Thickness	28 – 48mm
System Features	
Single Colour	✓
Dual Colour	✓
Textured Finish	✓
Anodised Finish	✓
Multi-Point Locking	✓
Sightline (interlock)	89mm
Sightline (Cill)	117.6mm
Sightline (Head)	117.6mm
Sightline (Jamb)	117.6mm

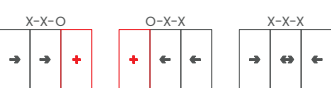
*Note: All maximum sizes should be checked against wind load and glass weights. Please contact AluK's technical department for further assistance on sizes and limitations.

CONFIGURATIONS

DUAL RAIL



TRI RAIL



KEY

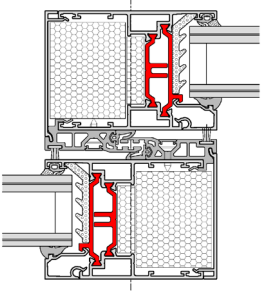


* Performance data based on CEN size for Building Regulations. For full test performance details please contact Technical Services. AluK recommends checking all system performance for any scheme prior to use. The maximum height of 3136mm, DOES NOT consider wind loading or glass weights which would need to be checked on each door setup of this size. i.e., if the glass weight is greater than 400 Kg's or the wind load above the interlock inertia values required, the height of the door would need to be reduced to accommodate these limits.

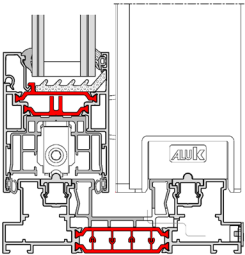
CAD CROSS SECTIONS AND THERMAL PROFILE

Additional details are available on request.

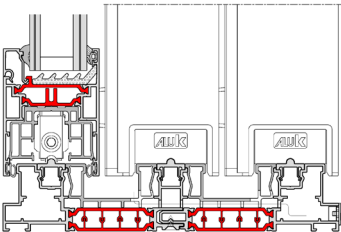
➤ S140 INTERLOCK



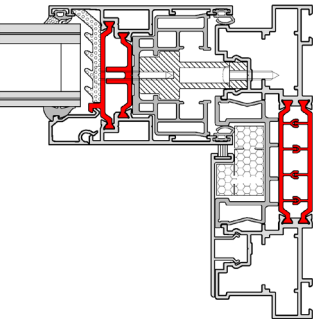
➤ S140 OUTER FRAME CILL



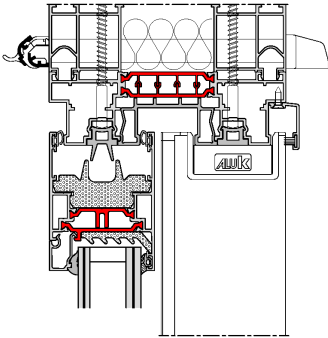
➤ S140 TRIPLE TRACK CILL



➤ S140 FIXED PANEL



➤ S140 ADD ON HEAD DETAIL



➤ S140 THERMAL PROFILE

