



Aluminium Window & Door Systems

Benefits of Aluminium

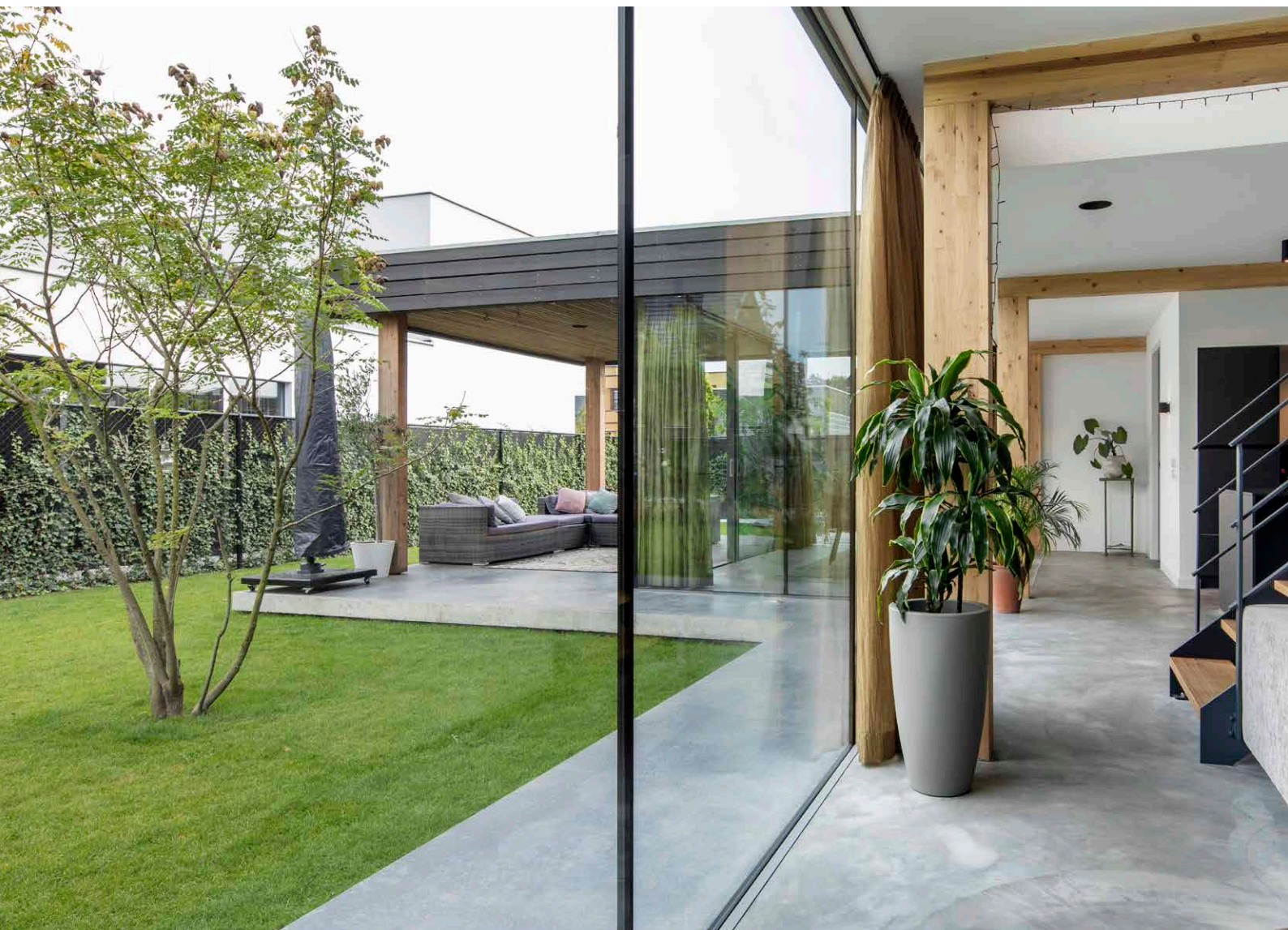
For over 30 years, we've been at the forefront of aluminium window and door design.

But why aluminium?

As one of the most sustainable construction materials available, choosing aluminium reduces carbon emissions and contributes to the lifecycle costing of a building. Its strength, durability and recyclability, amongst many other benefits, make it an ideal material for buildings.

- Lightweight, strong and almost 100% recyclable
- Doesn't warp or rust and is near maintenance-free
- Doesn't age like other organic materials and needs no UV protection
- Resistant to changing temperatures with minimal expansion and contraction
- Exceptionally versatile and easy to install

At Aluk, we're experts at using this versatile metal to create high performance and sustainable aluminium systems that surpass the needs of fabricators and installers across the UK.





By experts for experts

It's fair to say we live and breathe aluminium at AluK. From its melting point of 660.32°C, its vital role in the aerospace industry, to its remarkable low density, there's little we don't know about atomic number 13. More importantly, we're experts at using this versatile metal to create high performance and sustainable window and door systems that surpass the needs of fabricators and installers across the UK.

From the production line to our design and sales offices, every member of the AluK team is a leader in their field. It's this collective expertise and our traditional family values that has enabled us to design, engineer and manufacture industry-leading facade systems since 1993.

Boasting slimmer sightlines and greater feature options, all our products are manufactured to the highest UK standards. So whether commercial or residential, modern or traditional, you can be confident our experts will ensure every AluK product delivers peerless performance and signature style.



Tried, tested and trusted

From trusted favourites to the latest innovations, our comprehensive range of aluminium window and door systems has been designed and developed with fabricators, installers and homeowners in mind at every stage.

Furthermore, every system delivers the aesthetic appeal and exceptional build quality demanded by the industry. It also goes without saying they've all been tested and certified to the latest standards and accreditations.

These include PAS 24, BS4873, Secured By Design and Qualicoat for starters. Not to mention ISO 9001. They also hold Q-Mark Certifications for general performance windows and enhanced security windows and doors. Should we go on?

Whichever system you choose, we'll work closely with you to ensure you have all the information you require for successful fabrication and installation.

All the latest structural, thermal and wind calculations are available, as is a comprehensive suite of CAD, NBS Specifications, performance and environmental data.

ALWAYS UP TO THE TEST



Why choose AluK?

Driven by design

Without compromising on strength, our aluminium window and door systems are designed to offer your customers the narrowest of sightlines, allowing bigger glazing and providing greater light into their home.

Our integrated systems are designed for maximising profiles and parts, as well as to ensure fast fabrication and a wide range of installation options.

Colour

Access a large spectrum of contemporary and classic colour choices and finishes.

We also offer a range of standard single and dual colour products from stock.

Security

We understand the importance of security to your customers. That's why all our window and door systems are independently tested to ensure they not only meet current security regulations for new builds, but that they're inherently burglar resistant too.

Most of our systems are certified by PAS 24, Secured by Design and Q-mark accredited.

Thermal efficiency

Our window and door systems offer award-winning U-value performance for both double and triple glazing.

In fact, we were the first company to ever gain an A-rated aluminium double glazed window system in the market.

AluK Academy

Our free to access, in-house training academy is available to support you every step of the way. Whether that's keeping you up to date on our products, or making sure you understand legislative changes in the industry.

To find out more simply email training.uk@aluk.com

Performance

Each system includes water and acoustic barriers, and utilises the latest manufacturing technologies and techniques to provide long-term peace of mind.

They also have integrated drainage paths that allow water to pass through the system. This, combined with the high quality air seals and barriers, ensures they can tackle the ever-changing British climate with ease.

Window Energy Ratings

Our aluminium window systems are rated for their energy efficiency using the familiar A-G scale.

This means homeowners and architects can instantly see which windows to choose. WERs also affect fabricators, because in order to supply WER products a fabricator must join an official and recognised scheme.

This is to ensure that manufacturers can prove they have audited processes in place and that the ratings displayed are accurate.

As you'd expect, we have our own group scheme at AluK. This provides members fast track access to all our WER data, saving them valuable time and effort.

Service excellence

Expert service is key at AluK, so our trained architectural technicians and engineers are always on hand to offer guidance and support from design through to installation. We also have highly experienced Project Consultants able to help with design, system selection, construction details and project specifications for your specific sector.

Design Studio

As well as creating market-leading facades, we also have a vested interest in the industry as a whole. Our in-house design studio was created as a space for collaboration, education and interaction. Playing host to a range of specialist events and CPD seminars, our door is always open.

Understanding Part L

According to industry research, energy efficiency is still the third highest priority for homeowners looking to invest in new windows and doors (after quality and security) and surely, they have to be able to trust every promise being made by suppliers on the performance of their products?

We believe so. That's why AluK is committed to driving up standards right across the industry – and compliance is a major part of that. We recognise that Part L is challenging, but it's certainly not insurmountable.



Who is responsible?

- ▶ **Systems House** – the systems house is responsible for any system related data. This is usually supplied using technical manuals or data sheets.
- ▶ **Fabricator** – the fabricator is responsible for supplying the correct finished product and associated data, inline with the current legislation. If the glass is not supplied, information relating to the required thermal performance of the glass unit must be available.
- ▶ **Installer** – the installer is responsible for the product in situ and the UKCA/CE marking. Using information supplied from all parties the installer must ensure that the correct specification of product is correctly installed.

How do AluK products comply?

As a systems house, we have no choice but to comply with the new lower U-Values. We support the aim to reduce our carbon footprint in the UK and want to play our part by ensuring our windows and doors meet the new limiting values.

How have we changed our products?

Our route to meet the new regulations and support our customers has meant engineering many improvements to the internal design without changing the appearance of our systems.

Using new thermal break designs and foams, and new gaskets, our well-loved products have been modified to comfortably meet the new regulations for new build and existing dwellings.

Rest assured that many of our standard (non-HI) products can achieve both the 'Limiting' and lower 'Notional' U-values given in the English and Welsh regulations using triple glazing, if that is your preferred route.

For more information on new Part L regulations, head over to our dedicated website.

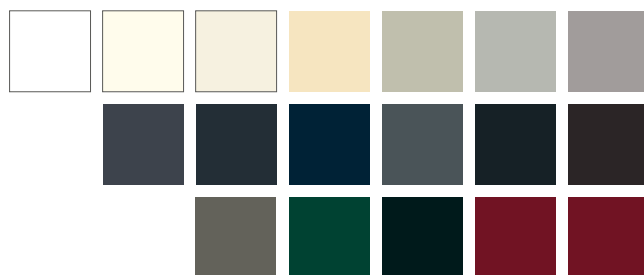


Colours for every occasion

From contemporary to heritage, the AluK colour collection combines four high-quality colour ranges that offer style and durability.

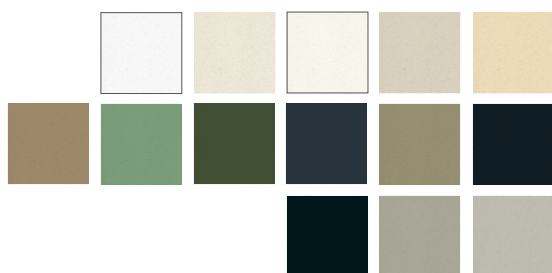
Elements, Homestead, Spectrum and Urbane each offer a wide choice of durable coatings that are extremely resistant to scratching and corrosion.

With an inspired range of textured, non-textured, metallic and special effects finishes, these palettes reflect both the latest colour trends and the enduring classics within the market.



Elements

Our stylish matt colour range features 18 vibrant RAL options in a smooth finish. Inspired by the diversity of nature, Elements offers the perfect combination of rich colours and versatile shades that will compliment any style of property.



Homestead

Inspired by traditional and period design, our timeless Homestead range offers a classic palette of tranquil neutrals and deep, cool hues. Combining the charm of the past with a modern, durable finish, Homestead has 13 tasteful RAL options to discover, all in a long-wearing textured finish for windows and doors.



Spectrum

Spectrum combines striking tones with textured metallic and special effects finishes to create an opulent range that is both modern and highly durable. With 21 contemporary textured colours, Spectrum compliments both high-end residential projects and volume specifications.



Urbane

Inspired by the intensity of contrast, Urbane offers the distinctive combination of strong tones and smooth shades that match the look and feel of an anodised finish. With 14 bold metallic colours to choose from, Urbane offers a protective finish to windows and doors in high-end and commercial developments.

If you'd like a colour brochure please contact us on 01291 639739
or email us at info.uk@aluk.com

These images should only be used as a colour guide rather than a true representation of the actual product colour.

Window systems

For over two decades we've been designing unique aluminium window systems that exceed the performance standards expected in modern building design.





Functionality and flexibility

We offer a wide range of window frame options that cater for various applications such as interface depths or bay angles.

We also understand that the ability to combine frame options is a major benefit to both the cost and appearance.

Our frame options include deep head profiles for trickle vents, odd leg frames for accommodating hardware timber and heritage for overcoming stone million and cill details.

Equal leg frame options are available from 25mm, 35mm and 55mm options.

Frame extenders are also available for our 70mm systems and for improved U-values.

Glazing options

Every project is different, which is why our systems allow for both internal and external glazing options.

We also offer glazing add-ons to suit heritage style applications.

Aesthetics

We offer a wide range of internal and external aesthetic styles. Chamfered, Ovolo, Square or Putty line options can really make any project look modern or traditional.

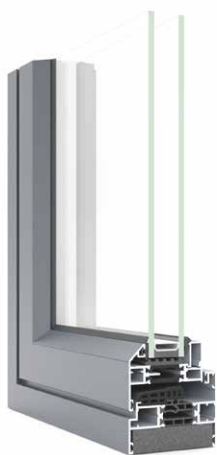
Our double beaded options allow for internal glazing without the use of dummy vents.

Openings

AluK windows are available in a full range of opening options; from open in to open out, side hung, top hung, bottom hung and tilt before turn, to French casement, fixed light and multi-light.

Design features

- › From odd leg and equal leg to deep head and frame reversers
- › Internal and external glazing options
- › PAS 24 certified
- › Integrated systems for maximising profiles and parts
- › Three chamber profile for maximising strength while crimping - achieves perfect corner assembly every time



58BW ST Flush HI, Putty Line



58BW ST Flush HI



58BW Flush HI





58BW FLUSH HI Window



The 58BW Flush window combines minimal sightlines and maximum weather resistance with all the best features of the tried and trusted 58BW range: advanced performance, versatility and security.

With a choice of slim sashes and a range of configuration options, the flush finish and slim sightlines of the 58BW Flush make this the perfect choice for contemporary new-build and refurbishment projects.

A double rebate provides market-leading weather performance, even in more exposed locations, and the 58BW Flush utilises common hardware with the existing 58BW and Heritage ST window ranges to ensure it can withstand a range of weather conditions.

The 58BW Flush shares the same sashes, features and hardware with the 70mm frame option for the 58BW suite, making it quicker and easier to fabricate with just three new profiles.

DESIGN FEATURES

- › Advanced weather performance – features like the double rebate, and friction stays on side-hung windows offer protection against bad weather conditions
- › Slimmer sightlines – 45mm ultra-slim sash suits a range of property styles
- › Unique polyamide thermal break design to improve thermal performance
- › Certified under the Secured by Design scheme
- › Tested to PAS 24

OPTIONS

- › Open-out sashes including top and side-hung.
- › The flush shadow line can be complimented with a choice of flat, putty line or stepped edge Heritage vent styles to suit the property
- › Available in a range of standard and RAL colours.
- › Stock offer – readily available on a 5-day lead time in colours 9910HG, 7016M, and 9005M as well as dual colour white/grey and white/black.

SPECIFICATIONS

Performance and accreditations	58BW FLUSH HI
U-Value (Double Glazing)	1.4 W/m ² K
U-Value (Triple Glazing)	1.2 W/m ² K
Window Energy Rating (WER)	B - C
BRE Green Guide Rating	A rated
Air Permeability	Class 4 (600 Pa)
Water Tightness	Class 9a (600Pa)
Wind Resistance	Class E2400 (2400 Pa)
Security	PAS 24
3rd Party Certification Q-Mark	✓

System

Depth	70mm
-------	------

Configurations

Opening	Open-Out
Top Hung	✓
Side Hung	✓
Bottom Hung	✓
Dummy Sashes	✓
Fixed Light	✓
Multi Light	✓
French Casement	✓

Size and weight limits

Top Hung

Max Size (mm)	1750w x 2500h
Min. Size	300w x 350h
Max Weight	180kg

Side Hung

Max Size (mm)	1300w x 1750h
Min. Size	300w x 300h
Max Weight	55kg

Fixed Light

Max Size (mm)	-
Min. Size	-
Max Weight	200kg

Glazing

Glazing Options	Internal & External
Glazing Thickness**	24mm-40mm

System Features

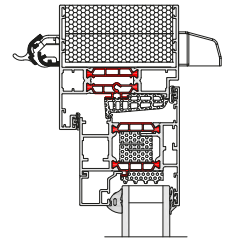
Single Colour	✓
Dual Colour	✓
Textured Finish	✓
Anodised Finish	✓
Multi-Point Locking	✓
Sightline (Frame to Vent)	98mm
Sightline (Vent to Mullion to Vent)	113mm
Sightline (Dummy Sash)	158mm
Sightline (Fixed Light)	53mm

**Glazing thickness: Other thicknesses may be possible dependant on profile combinations specified. Fabricators should refer to AluK technical manual glazing section for details.

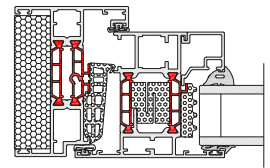
CAD CROSS SECTIONS AND THERMAL PROFILE

Additional details are available on request.

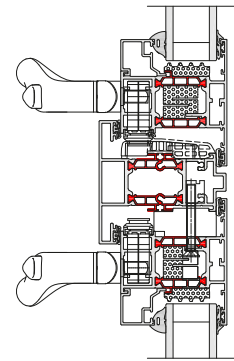
➤ 58BW FLUSH HI HEAD



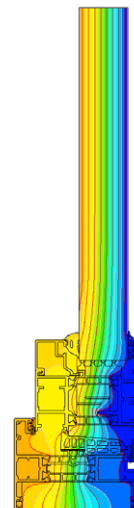
➤ 58BW FLUSH HI JAMB



➤ 58BW FLUSH HI MULLION



➤ 58BW FLUSH HI THERMAL PROFILE



Contemporary Design with a traditional twist

Our 58BW Flush windows are the ideal replacement for timber windows in traditional refurbishment projects. Replicating the slim sightlines and sharp shadow lines of timber, they offer all the inherent benefits of aluminium, such as low maintenance, and enhanced security, thermal and weather performance.

For the owners of a picturesque brick and flint cottage in rural Hampshire, they proved the perfect choice to replace draughty and inefficient timber frames in their 19th century home.

The owners wanted to replace their existing windows with something which maintained the essential character of the property, but which had a nod to contemporary 21st century design. They chose AluK's 58BW frames, with an ultra slim 45mm sightline on the sash and 24mm on the frame, primarily because of the aesthetics, but also because they are virtually maintenance free.

In total, 13 open out casement windows have been installed in the cottage, all in RAL7004 Signal Grey with a 5mm shadow line and no visible gasket. Double glazed throughout, they are not only eliminating draughts, but also helping to reduce energy bills.

The windows were manufactured by AluK's fabrication partner CWG Choices and installed by Allums Property Services of Newbury. Fabrication is straightforward because the 58BW Flush uses the same standard sash profiles as the AluK 58BW ST window and, installation is made easy thanks to the 70mm depth and internal glazing.

Kevin Allum of Allums Property Services commented: "This was the first time we had installed the 58BW Flush frames and it was a real pleasure. The installation looks great and the homeowners were delighted with the whole process from start to finish."





58BW CASEMENT HI Window

Built to the highest UK standards, the 58BW Window System delivers a high performance and cost-effective solution with impressively narrow profiles. Equally at home on residential and commercial projects, the system is available in a number of formats including Top Hung, Side Hung and French Casement.

The system's clean lines and advanced functionality meet the demands of almost every modern building construction. Its competitive pricing also makes it a highly popular choice with specifiers both in the UK and around the globe. In addition to being certified under Secured By Design and tested to PAS 24, the 58BW also holds a Green Guide 'A' rating.

DESIGN FEATURES

- › Certified under the Secured By Design scheme
- › Tested to PAS 24
- › Integrated deep head profiles for ease of trickle ventilation
- › Unique polyamide thermal break design to improve thermal performance
- › Casement system sightlines to match the Tilt-Before-Turn window sightlines
- › Reverse rebate option for internal glazing throughout

OPTIONS

- › Available in two frame depths: 58mm or 70mm
- › Supports both open-in and open-out projects
- › Internally or externally glazed to accommodate low and high-rise projects
- › Glazing 24mm-40mm
- › Available in the following configurations: Top Hung, Side Hung, Bottom Hung, Fixed Light, Multi-light and French Casement
- › Available for Lifetime Homes Standard (LHS)
- › Dedicated fixing straps for ease of installation
- › Designed with a Euro Groove to accommodate standard locking hardware
- › Smoke vent certification compliance to EN12101-2:2003 Annex G
- › Available in single or dual colour polyester powder coating, texture and anodised finishes



SPECIFICATIONS

Performance and accreditations	58BW CASEMENT HI
U-Value (Double Glazing)	1.4 W/m ² K
U-Value (Triple Glazing)	1.2 W/m ² K
Window Energy Rating (WER)	B - C
BRE Green Guide Rating	A rated
Air Permeability	Class 4 (600 Pa)
Water Tightness	Class 9a (600Pa)
Wind Resistance	Class E2400 (2400 Pa)
Security	PAS 24
3rd Party Certification Q-Mark	✓

System

Depth	58 & 70mm
-------	-----------

Configurations

Opening	Open-Out
Top Hung	✓
Side Hung	✓
Bottom Hung	✓
Tilt & Turn	-
Fixed Light	✓
Multi-Light	✓
French Casement	✓

Size and weight limits

Top Hung

Max Size (mm)	1750w x 2500h
Min. Size	300w x 350h
Max Weight	180kg

Side Hung

Max Size (mm)	838w x 1750h
Min. Size	300w x 300h
Max Weight	55kg

Bottom Hung

Max Size (mm)	1500w x 2500h
Min. Size	300w x 316h
Max Weight	45kg (5 hinges)

Butt Hinges (Side & Bottom Hung)

Top hung (max weight)	40 Kg
Side hung (max weight)	24 Kg

Fixed Light

Max Weight	200kg
------------	-------

Glazing

Glazing Options Internal Bead	Internal & External Bead
Glazing Thickness **	24mm - 40mm

System Features

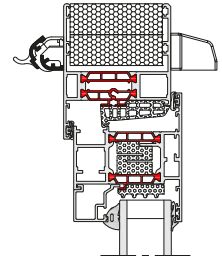
Single Colour	✓
Dual Colour	✓
Textured Finish	✓
Anodised Finish	✓
Multi-Point Locking	✓
Smoke Vent Compliance	✓
Sightline (Frame to Vent)	75mm
Sightline (Vent to Mullion)	89mm
Sightline (Fixed Light)	43mm

**Glazing thickness: Other thicknesses may be possible dependant on profile combinations specified. Fabricators should refer to AluK technical manual glazing section for details.

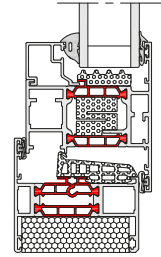
CAD CROSS SECTIONS AND THERMAL PROFILE

Additional details are available on request.

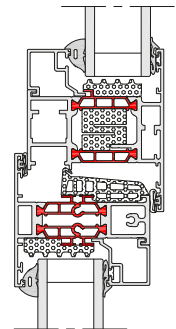
➤ 58BW CASEMENT HI HEAD



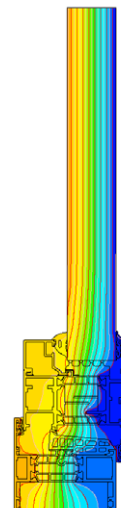
➤ 58BW CASEMENT HI JAMB



➤ 58BW CASEMENT HI MULLION



➤ 58BW CASEMENT HI THERMAL PROFILE



58BW ST Flush HI Window

The 58BW ST Flush window combines minimal sightlines of the ST system with all the best features of the tried and trusted 58BW range: advanced performance, versatility and security.

With a choice of three slim sashes and a range of configuration options, the flush finish and slimmer sightlines of the 58BW ST Flush make this the perfect choice for contemporary new-build and refurbishment projects.

A double rebate provides market-leading weather performance, even in more exposed locations, and the 58BW ST Flush utilises common hardware with the existing 58BW and Heritage ST window ranges to ensure it can withstand a range of weather conditions.

The 58BW ST Flush shares the same sashes, features and hardware with the 70mm frame option for the 58BW suite, making it quicker and easier to fabricate with just three new profiles.

DESIGN FEATURES

- › Advanced weather performance – features like the double rebate, and friction stays on side-hung windows offer protection against bad weather conditions
- › Slimmer sightlines – 45mm ultra-slim sash suits a range of property styles
- › Unique polyamide thermal break design to improve thermal performance
- › Certified under the Secured by Design scheme
- › Tested to PAS 24

OPTIONS

- › Open-out sashes including top and side-hung.
- › The flush shadow line can be complimented with a choice of flat, putty line or stepped edge vent styles to suit the property
- › Available in a range of standard and RAL colours.
- › Stock offer – readily available on a 5-day lead time in colours 9910HG, 7016M, and 9005M as well as dual colour white/grey and white/black.



SPECIFICATIONS

Performance and accreditations	58BW ST FLUSH HI
U-Value (Double Glazing)	1.4 W/m ² K
U-Value (Triple Glazing)	1.1 W/m ² K
Window Energy Rating (WER)	A - B
BRE Green Guide Rating	A rated
Air Permeability	Class 4 (600 Pa)
Water Tightness	Class E1500 (1500 Pa)
Wind Resistance	Class E2400 (2400 Pa)
Security	PAS 24
3rd Party Certification Q-Mark	✓

System

Depth	58 & 70mm
-------	-----------

Configurations

Opening	Open-Out
Top hung	✓
Side hung	✓
Bottom hung	✓
French casement	✓

Size and weight limits

Top Hung

Max Size (mm)	1436w x 1336h
Min. Size	386w x 336h
Max Weight	40kg

Side Hung

Max Size (mm)	736w x 1436h
Min. Size	336w x 386h
Max Weight	24kg

Fixed Light

Max Size (mm)	-
Min. Size	-
Max Weight	200kg

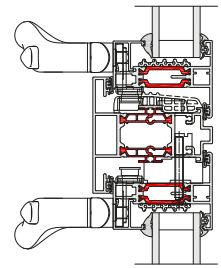
System Features

Frame depth	58mm and 70mm
Dual colour option	✓
Multi-point locking	✓
Glazing options	Internal and external
Glazing thickness	24mm - 32mm
Sightline (Frame to Vent)	66mm
Sightline (Vent to Mullion)	81mm
Sightline (Fixed Light)	43mm

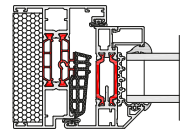
CAD CROSS SECTIONS AND THERMAL PROFILE

Additional details are available on request.

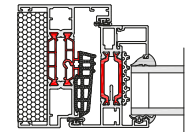
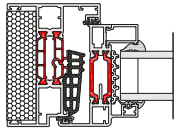
➤ 58BW ST FLUSH HI FRENCH CASEMENT



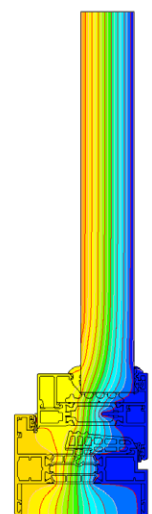
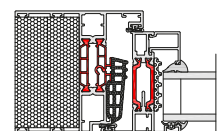
➤ 58BW ST FLUSH HI JAMB SECTION 1



➤ 58BW ST FLUSH HI JAMB SECTION 2



➤ 58BW ST HI THERMAL PROFILE



**Glazing thickness: Other thicknesses may be possible dependant on profile combinations specified. Fabricators should refer to AluK technical manual glazing section for details.



58BW ST HI Steel Replacement System



Ideal for projects where planning or design requires the installation of sympathetic materials, our 58BW ST HI Steel Replacement Window System provides the look of steel with the benefits of aluminium. Designed to replace and complement existing steel windows, the range has been specifically developed for use on listed buildings, warehouses and similar buildings, where steel windows have always traditionally been fitted.

Available in a wide range of styles including Top Hung, Side Hung, Fixed Light and French Casement, the system cleverly replicates the narrow sight lines associated with steel windows whilst providing superior performance and security. The system also includes hardware that is sympathetic to traditional steel window designs.

DESIGN FEATURES

- › Slim sightlines to match existing steel windows
- › Internally and externally beaded for ease of site glazing on high-rise applications
- › Unique polyamide thermal break design to improve performance
- › Integrated deep head profiles for ease of trickle ventilation
- › Accommodates standard hardware including friction stays and shoot bolt locking
- › Certified under the Secured By Design scheme
- › Ideal for Heritage, Listed Buildings and steel window replacements

OPTIONS

- › Accommodates up to 32mm glazing units for thermal and acoustic performance
- › Casement clips available for easy fit and removal of dummy vents
- › Dedicated fixing straps for ease of installation
- › Four different sash profiles to achieve design and planning permission requirements
- › Available in single or dual colour polyester powder coating, texture and anodised finishes

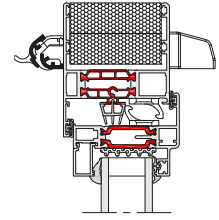
SPECIFICATIONS

Performance and accreditations	58BW ST HI
U-Value (Double Glazing) (Ug: 1.0 W/m²K)	1.4 W/m²K
U-Value (Triple Glazing) (Ug: 0.7 W/m²K)	1.1 W/m²K
Window Energy Rating (WER)	A - B
BRE Green Guide Rating	A rated
Air Permeability	Class 4 (600 Pa)
Water Tightness	Class E1500 (1500 Pa)
Wind Resistance	Class E2400 (2400 Pa)
Security	PAS 24 & SBD
3rd Party Certification Q-Mark	✓
System	
Depth	58mm & 70mm
Configurations	
Opening	Open-Out
Top Hung	✓
Side Hung	✓
Bottom Hung	✓
Fixed Light	✓
Multi Light	✓
Size and weight limits	
Top Hung	
Max Size (mm)	1436w x 1336h
Min. Size	386w x 336h
Max Weight	40kg
Side Hung	
Max Size (mm)	736w x 1436h
Min. Size	336w x 386h
Max Weight	24kg
Fixed Light	
Max Size (mm)	-
Min. Size	-
Max Weight	200kg
Glazing	
Glazing Options	Internal & External
Glazing Thickness**	24mm-32mm
System Features	
Single Colour	✓
Dual Colour	✓
Textured Finish	✓
Anodised Finish	✓
Multi-Point Locking	✓
Sightline (Frame To vent)	66mm
Sightline (Vent To Mullion)	81mm
Sightline (Fixed Light)	43mm
Aesthetics	
Putty Line	✓
Stepped Edge	✓
Square	✓
Exterior Glazed Chamfer	✓

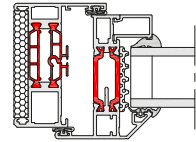
CAD CROSS SECTIONS AND THERMAL PROFILE

Additional details are available on request.

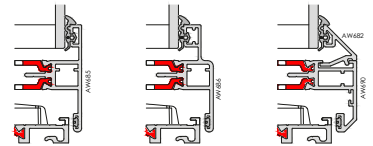
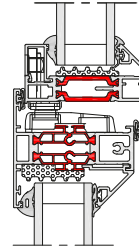
➤ 58BW ST HI HEAD



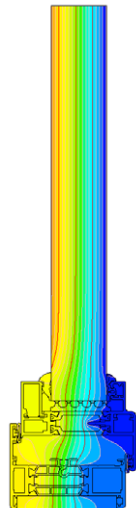
➤ 58BW ST HI JAMB



➤ 58BW ST HI MULLION / TRANSOM



➤ 58BW ST HI THERMAL PROFILE



**Glazing thickness: Other thicknesses may be possible dependant on profile combinations specified. Fabricators should refer to AluK technical manual glazing section for details.



58BW TBT HI Window



Offering exceptional child safety and seamless operation, our tilt before turn windows are an ever-popular choice for both multi-residential and light commercial applications.

Made from high performance aluminium these sustainable systems are inherently strong and lightweight. They're also an ideal solution for high-rise buildings where internal glazing and ease of cleaning are essential.

DESIGN FEATURES

- › Certified under the Secured By Design scheme
- › Tested to PAS 24
- › Green guide rated A
- › Integrated deep head profiles for ease of trickle ventilation
- › Unique polyamide thermal break design to improve thermal performance

OPTIONS

- › Glazing 24mm – 40mm
- › Available in a range of single or dual colour and anodised finishes
- › Available in the following aesthetics: Bay, Contemporary and Square
- › Available in the following configurations: tilt-before-turn, side hung, fixed light and multi-light
- › Available for Lifetime Homes Standard (LHS)

SPECIFICATIONS

Performance and accreditations	58BW TBT HI
U-Value (Double Glazing)	1.4 W/m ² K
U-Value (Triple Glazing)	1.2 W/m ² K
Window Energy Rating (WER)	B - C
BRE Green Guide Rating	A rated
Air Permeability	Class 4 (600 Pa)
Water Tightness	Class 8a (600Pa)
Wind Resistance	Class E2400 (2400 Pa)
Security	PAS 24
3rd Party Certification Q-Mark	✓

System

Depth	58 & 70mm
-------	-----------

Configurations

Opening	Open-in
Top Hung	-
Side Hung	✓
Bottom Hung	✓
Tilt & Turn	✓
Fixed Light	✓
Multi-Light	✓
French Casement	-

Size and weight limits

Side Hung

Max Size (mm)	1725mm x 2300mm
Min. Size	380mm x 575mm / 480mm x 375mm
Max Weight	100kgs

Bottom Hung

Max Size (mm)	1725w x 2300mm
Min. Size	380mm x 575mm / 480mm x 375mm
Max Weight	100kgs

Tilt & Turn

Max Size (mm)	1725w x 2300mm
Min. Size (mm)	380mm x 575mm / 480mm x 375mm
Max Weight	130 kgs

Fixed Light

Max Weight	200kg
------------	-------

Glazing

Glazing Options	Internal Bead
Glazing Thickness **	24mm - 40mm

System Features

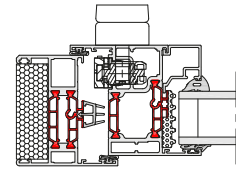
Single Colour	✓
Dual colour option	✓
Textured Finish	✓
Anodised Finish	✓
Multi-Point Locking	✓
Lifetime Homes	✓
Sightline (Frame to Vent)	86mm
Sightline (Vent to Mullion)	100mm
Sightline (Fixed Light)	43mm

**Glazing thickness: Other thicknesses may be possible dependant on profile combinations specified. Fabricators should refer to AluK technical manual glazing section for details.

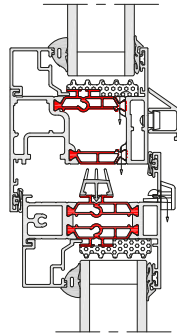
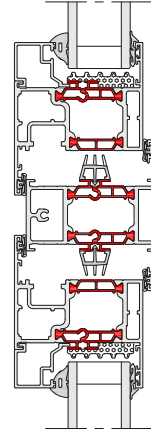
CAD CROSS SECTIONS AND THERMAL PROFILE

Additional details are available on request.

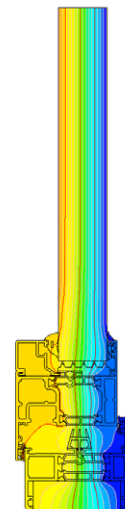
58BW TBT HI HEAD



58BW TBT HI MULLION



58BW TBT HI THERMAL PROFILE



C70S Window

› OPEN-OUT DETAILS



› OPEN-IN DETAILS



Beautifully engineered and brilliantly functional, the C70S delivers class-leading performance with U-values of 1.3 W/m²K, advanced water tightness and a range of features to simplify fabrication and installation.

Meeting and exceeding the key thermal, acoustic and performance demands of the commercial specifiers, the C70S is the perfect aluminium solution for residential and commercial projects.

DESIGN FEATURES

- › Universal EPDM carrier groove – allows clip-in EPDM strip and direct lug fixing to be used on all outer frames, frame extenders and sub cill profiles
- › Outer Frames, Transoms/Mullions, Beads, Gaskets, Ancillary profile parts used across both Open-in and Open-out
- › Consistent sightlines with 58BW system offering maximum project flexibility
- › Euro groove (16mm full depth) allowing for a wider choice of hardware
- › 5-day lead time in 9910HG, 7016M, 9005M and key dual colour options

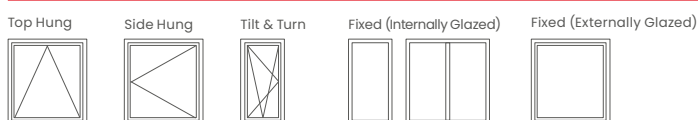
OPTIONS

- › Three levels of insulation: standard, partial and HI
- › Glazing options 24mm-50mm
- › Side Hung, Top Hung, Fixed Light & Tilt Before Turn configurations available
- › Trickle ventilation available

SPECIFICATIONS

Performance and accreditations	C70S HI Open-in	C70S HI Open-out
Uw (Double Glazing)	1.3W/m ² k	1.3W/m ² k
Uw (Triple Glazing)	1.1W/m ² k	1.1W/m ² k
Window Energy Rating	A Rated	A Rated
Air Tightness (Pa)	Class 4 (600Pa)	Class 4 (600Pa)
Water Tightness (Pa)	E900 (900Pa)	E1500 (1500Pa)
Wind Load (Pa)	Class E2400 (2400Pa)	Class E2400 (2400Pa)
Security	PAS 24 & SBD	PAS 24 & SBD
System		
Depth	70mm	70mm
Configurations		
Top Hung	-	✓
Side Hung	✓	✓
Tilt before Turn	✓	-
Bottom Hung	✓	✓
Fixed Light - internally glazed (Reversers available)	✓	✓
Fixed Light - externally glazed (Reversers available)	✓	✓
Size and weight limits		
Top Hung		
Max Size (mm)	1680w x 2500h	1680w x 2500h
Min. Size (mm)	320w x 267h	320w x 267h
Max Weight	180kg	180kg
Side Hung		
Max Size (mm)	1000w x 1680h	1000w x 1680h
Min. Size (mm)	300w x 320h	300w x 320h
Max Weight	55kg	55kg
Tilt & Turn		
Max Size (mm)	1300w x 2300h	1300w x 2300h
Min. Size (mm)	480w x 375h	480w x 375h
Max Weight	130kg	130kg
Fixed Light		
Max Size (mm)	2300w x 2300h	2300w x 2300h
Min. Size (mm)	300w x 300h	300w x 300h
Max Weight	300kg	300kg
Glazing		
Glazing panel options: double and triple	24mm - 50mm	24mm - 50mm
System Features		
Single Colour	✓	✓
Dual Colour	✓	✓
Anodised	✓	✓
Textured	✓	✓
Locking Handles	✓	✓
Friction Hinges	-	✓
Butt Hinges	-	✓
Groove type	PVC Euro 16mm	PVC Euro 16mm
Variable Handle Position	✓	✓
Trickle ventilation	✓	✓
Sightlines	89mm	89mm
Frame to Vent	89mm	89mm
Vent to Mullion	103mm	103mm
Fixed Light	43mm	43mm

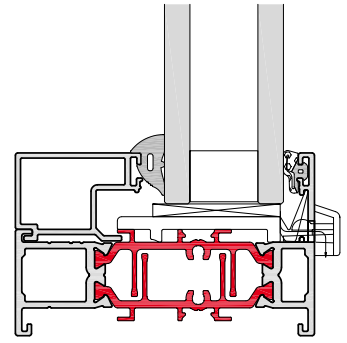
CONFIGURATIONS



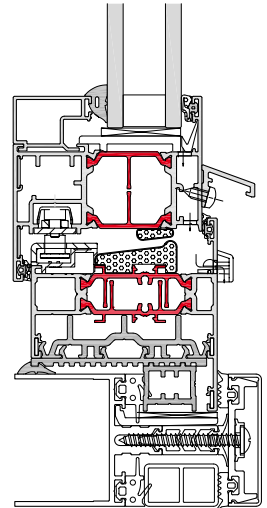
CAD CROSS SECTIONS AND THERMAL PROFILE

Additional details are available on request.

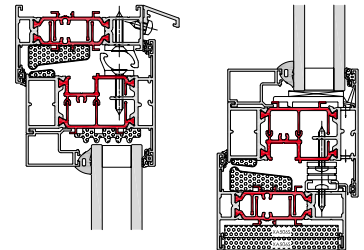
➤ C70S OPEN-IN FRAME DETAIL



➤ C70S OPEN-IN CURTAIN WALL ADAPTOR



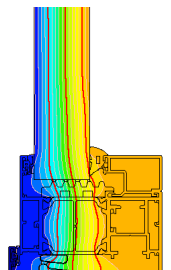
➤ C70S OPEN-OUT FRAME AND VENT DETAIL



➤ C70S OPEN-OUT THERMAL PROFILE



➤ C70S OPEN-IN / TBT THERMAL PROFILE



Door systems

Engineered to integrate seamlessly with our window system range, our aluminium door system range remains our most popular products and provide unrivalled safety, security and installation simplicity.







Heritage Entrance Door



Stylish and industrial, the Heritage Entrance Door allows you to create a seamless aesthetic across a wide range of door opening sizes and uses, from single doors to French doors with multiple fan lights.

Slim sightlines of just 51.7mm allows maximum light transmission, elegantly framing outside space. All complemented by market-leading U-Values of 1.4 w/m²K making it fully compliant with Part L Building Regulations for refurbishment projects.

Crafted to match the 58BW HI window range, its shared profiles, beads, and ancillaries offer new and existing fabricators a full heritage range of windows and doors with less stock-holding and simple fabrication.

DESIGN FEATURES

- › Suited to existing 58BW ST HI range of profiles, beads and ancillaries
- › 45 degree mitre and crimped sash
- › Slim sightlines: 51.7mm sash / 112.5mm sash to mullion
- › New Heritage door 28mm QUIK CLIP™ bead for door sash
- › Open Out/In 90 degree door restrictor
- › Hinges with built-in security claw features

OPTIONS

- › Suited Heritage door hardware and handles in four colours/textures
- › Option to add multiple horizontal and vertical profiles to door sash using plant-on bars or 46.5mm door transom profile
- › Configurations of single / double / open-in / open-out with options for side and fan lights

SPECIFICATIONS

Performance and accreditations	SINGLE OPEN OUT	DOUBLE OPEN IN
U-value (Double glazing 1.0 CP Unit)	1.4 W/m ² K	1.4 W/m ² K
Air Permeability	600 Pa (Class 4)*	600 Pa (Class 4)*
Water Tightness	750 (Class E750)*	200 Pa (Class 5A)*
Wind Resistance	TBC	TBC
System		
Depth	58-70 mm	58-70 mm
Size and weight limits		
Max Door Size (WxH)	1000mm x 2300mm	2000mm x 2300mm
Min Door Size (WxH)	600mm x 1800mm	1200mm x 1800mm
Max Vent Weight	65 kg	65 kg
Glazing		
Glazing Thickness	24 - 28 mm	24 - 28 mm
Glazing Options	Double Glazed	Double Glazed
System Features		
Dual Colour Option	✓	✓
Multi-Point Locking	✓	✓
Barrell Hinges	✓	✓
Thermally Broken	Low Lambda PA	Low Lambda PA

CONFIGURATIONS



Single Door
Open In & Open Out



Single / Double Door
+ Side Lights



Double Door
Open In & Open Out

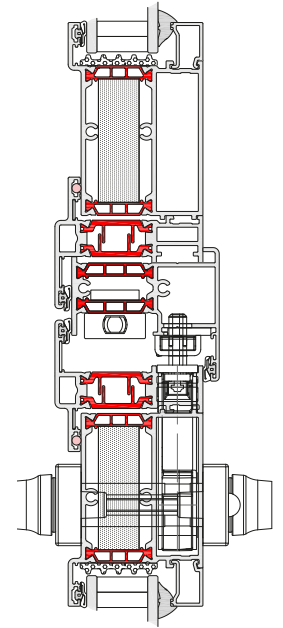


Single / Double Door
+ Fan Lights

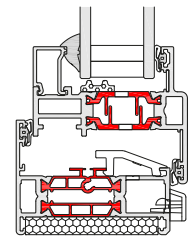
CAD CROSS SECTIONS AND THERMAL PROFILE

Additional details are available on request.

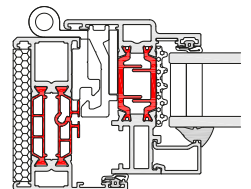
➤ 58BWST HI DOUBLE DOOR MEETING STILE



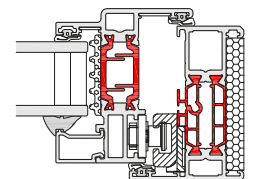
➤ 58BWST HI OPEN OUT CIL



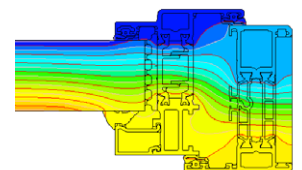
➤ 58BWST HI OPEN OUT HINGE JAMB



➤ 58BWST HI OPEN OUT LOCK JAMB



➤ 58BWST HI THERMAL PROFILE



*Internal tests only. UKAS testing TBC



58BD HI Entrance Door

Available in a wide range of styles and formats, our stylish aluminium entrance door system is suitable for both light and medium-duty use.

Designed with security and flexibility front of mind, every door in the range is available in single and double configurations making them ideal for almost any application.



DESIGN FEATURES

- › Certified under the Secured By Design scheme
- › Tested to PAS 24
- › Multi-point locking mechanism
- › Cloaking feature on slave door conceals lock and prevents any access to locking points
- › Eurogroove hardware fitting
- › Security feature includes anti-lift feature built into the hinge
- › Low threshold

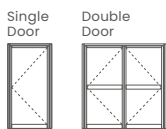
OPTIONS

- › Glazing 24mm – 40mm
- › 58mm or 70mm frame depth to accommodate varying types of applications
- › Low threshold option
- › Available in a range of single or dual colour and anodised finishes
- › Available for new build or refurbishment projects
- › Available in single or double door configuration

SPECIFICATIONS

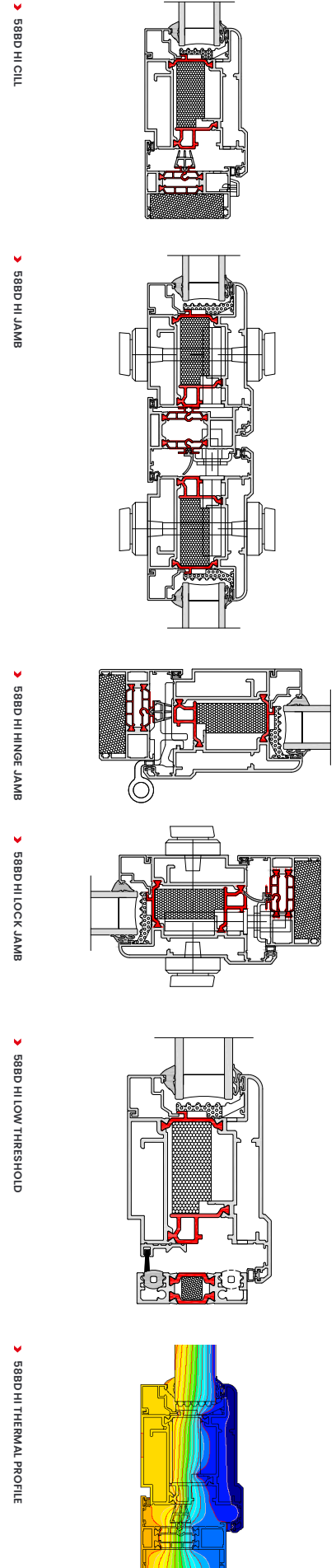
	Single Open-In	Single Open-Out	Double Open-In	Double Open-Out
Performance*and accreditations				
U-Value (Double Glazing) (Ug: 1.0 W/m²K)	1.3 W/m²K	1.3 W/m²K	1.3 W/m²K	1.3 W/m²K
U-Value (Triple Glazing) (Ug: 0.7 W/m²K)	1.1 W/m²K	1.1 W/m²K	1.1 W/m²K	1.1 W/m²K
Air Permeability	Class 4 (600 Pa)	Class 4 (600 Pa)	Class 3 (600 Pa)	Class 3 (600 Pa)
Water Tightness	Class 3a (100 Pa)	Class 7a (300 Pa)	Class 7a (300 Pa)	Class 9a (600 Pa)
Wind Resistance	Class A3 (1200 Pa)	Class AE2400 (2400 Pa)	Class A3 (1200 Pa)	Class A4 (1600 Pa)
Building Regulations Part L Compliant	✓	✓	✓	✓
Building Regulations Part M Compliant	✓	✓	✓	✓
Security	PAS 24 & SBD	PAS 24 & SBD	PAS 24 & SBD	PAS 24 & SBD
Durability EN1191 Category	50,000 Cycles	50,000 Cycles	50,000 Cycles	50,000 Cycles
3rd Party Certification Q-Mark	✓	✓	✓	✓
System				
Depth	58mm - 70mm	58mm - 70mm	58mm - 70mm	58mm - 70mm
Size and weight limits				
Maximum Door Size (mm)	1200w x 2400h	1200w x 2400h	2400w x 2400h	2400w x 2400h
Maximum Door Weight	3 Hinges 67.5kg 4 Hinges 90kg	3 Hinges 67.5kg 4 Hinges 90kg	3 Hinges 67.5kg 4 Hinges 90kg	3 Hinges 67.5kg 4 Hinges 90kg
Glazing				
Glazing Thickness	24mm-40mm	24mm-40mm	24mm-40mm	24mm-40mm
System Features				
Single Colour	✓	✓	✓	✓
Dual Colour	✓	✓	✓	✓
Textured Finish	✓	✓	✓	✓
Anodised Finish	✓	✓	✓	✓
Thermally Broken	✓	✓	✓	✓
Sightline (Head)	129.5mm	129.5mm	129.5mm	129.5mm
Low Threshold Sightline (Cill)	111mm	111mm	111mm	111mm
Sightline (Jamb)	129.5mm	129.5mm	129.5mm	129.5mm
Sightline (Meeting Stile)	n/a	n/a	209.5mm	209.5mm
Panel Door	✓	✓	✓	✓
Multi-Point Locking	✓	✓	✓	✓
Barrel Hinges	✓	✓	✓	✓
Low Threshold	✓	✓	✓	✓

CONFIGURATIONS



CAD CROSS SECTIONS AND THERMAL PROFILE

Additional details are available on request.



* Performance data based on CEN size for Building Regulations. For full test performance details please contact Technical Services. AlUK recommends checking all system performance for any scheme prior to use.



77ID Fully Rebated Door System



Our highest-performance door, the 77ID fully rebated door system is ideal for new build and refurbishment developments. This system integrates minimal sightlines into our 77 window systems and is suitable for use in both high and low-rise buildings. The system has been specifically designed to meet the most demanding UK performance requirements in terms of thermals, weathering and security.

Boasting modern, contemporary styling, the 77ID system features a fully rebated flush sash profile design for an uninterrupted sleek finish. Utilising high-performance polyamides, insulated centre seals, profile foam insertions and sound muffling gaskets, the door achieves class leading weather and acoustic performance. The 77ID system also fully integrates into our curtain wall and 77 window systems.

For optimal design flexibility, the 77ID is available in single or dual colour options, including any RAL colour and anodised finishes.

DESIGN FEATURES

- › Highest levels of thermal performance
- › Multi chamber low lambda polyamide thermal breaks insulated composite centre seals and profile foam inserts
- › Integrates with AluK curtain wall and 77 series window systems
- › Dedicated groove for factory mounting of membranes ensuring air, wind and water performance
- › 77mm minimal frame depth
- › High performance low threshold solution
- › Fully rebated flush sash profile design for uninterrupted sleek finish

OPTIONS

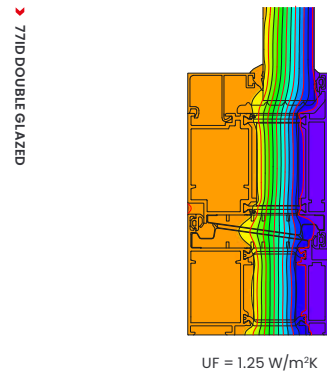
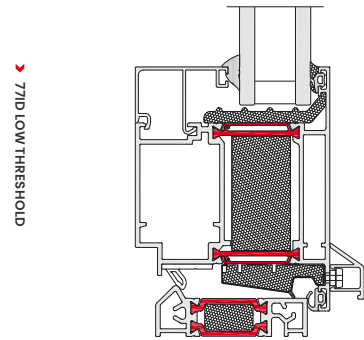
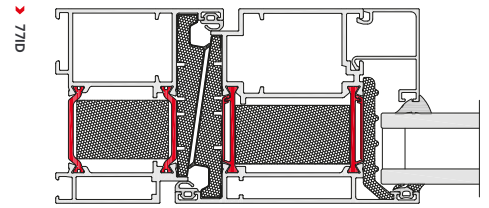
- › Wide variety of configurations
- › Three hinge methods to choose from face mounted and slim barrel
- › Modular locking arrangement both handle or key driven locks
- › Incorporates the AluK Novaue handle design range for suited windows and doors
- › Customisable in almost every possible single or dual colour polyester powder coating, textured or anodised finish available
- › Enhanced PAS24 security tested solutions

SPECIFICATIONS

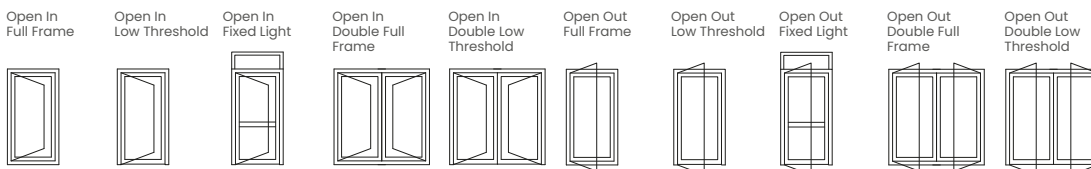
Performance and accreditations	77ID
U-Value (Double Glazing) 1.0 CP	1.2 W/m ² K
U-Value (Triple Glazing) 0.8 CP	0.9 W/m ² K
Air Permeability	Class 4 (600 Pa)
Water Tightness	9A (600 Pa)
Wind Resistance	C5 (2000 Pa)
Security	PAS 24 & SBD
3rd Party Certification Q-Mark	✓
System	
Depth	77mm
Configurations	
Open In / Out	✓
Single / Double Doors	✓
Low Threshold	✓
Fully Rebated	✓
Weight limits	
Max Size (mm)	1250w x 3100h (See Technical Manual)
Min. Size (mm)	650w x 1860h (See Technical Manual)
Max Weight	160kg (See Technical Manual)
Glazing	
Glazing Thickness	24mm – 50mm
System features	
Single Colour	✓
Dual Colour	✓
Textured Finish	✓
Anodised Finish	✓
Multi-Point / Single Locking	Multi-Point
Standard Hardware Groove	AluK IW Groove
EPDM Groove	✓
Locking Handles	✓
Concealed Hinges	✓
Flush Profiles	✓

CAD CROSS SECTIONS AND THERMAL PROFILE

Additional details are available on request.



CONFIGURATIONS



These elevations are PAS24 compliant.

GT55 TB

Commercial Door



An effective choice for shop fronts, entrances and ground floor treatments, the GT55 TB provides exceptional security and performance. Delivering high levels of energy efficiency thanks to its thermally broken profiles, the system has been designed in a ladder frame construction to provide a flexible solution for low-rise glazing applications. Screening can accommodate single and double glazing. Doors can accommodate double and triple glazing.

The system offers PAS 24 rating and is Secured By Design-accredited across a suite of configurations including single and double doors, screening, and side and fan lights. It also features a range of PAS 24 hardware including panic, mechanical and electro-mechanical locking for both single and double doors. Easily integrated with other AluK systems, the GT55 TB includes an integrated range of high traffic, anti-finger trap doors.

DESIGN FEATURES

- › 110mm frame depth to accommodate varying types of applications
- › Slim 55mm profile width for increased glazing and light transmission
- › Fully compatible with other AluK systems
- › One of the most comprehensive PAS 24 and Secured By Design certified system on the market today
- › Robust mechanical connection detail between rail and stile for ultimate strength in high traffic environments
- › GT55 TB can be used to create louvred and panelled doors with a variation of inserts

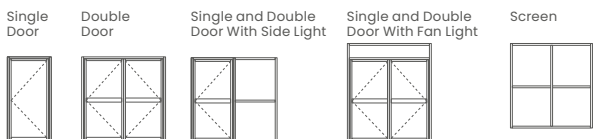
OPTIONS

- › Wide range of hardware available offering full customisation
- › Available in single or dual colour polyester powder coating, texture and anodised finishes
- › Different threshold, document M compliant
- › Concealed closer hardware

SPECIFICATIONS

Performance and accreditations	Single	Double	GT55 TB Screening
U-Value (Double Glazing) (Ug: 1.0 W/m²K)	1.7 W/m²K	1.8 W/m²K	1.4 W/m²K
U-Value (Triple Glazing) (Ug: 0.7 W/m²K)	1.5 W/m²K	1.6 W/m²K	1.1 W/m²K
Air Permeability	-	-	Class 4 (600 Pa)
Water Tightness	-	-	Class EI200 (1200 Pa)
Wind Resistance	-	-	Class B4 (1600 Pa)
Security	PAS 24 & SBD	PAS 24 & SBD	PAS 24 & SBD
3rd Party Certification Q-Mark	✓	✓	✓
System			
Depth	110mm	110mm	110mm
Size and weight limits			
Maximum Door Leaf Size (mm)	1200w x 2400h	2400w x 2400h	-
Maximum Door Leaf Weight	110kg	110kg	-
Glazing			
Glazing Thickness (Single Glazing)	-	-	6mm - 12mm
Glazing Thickness (Double Glazing)	24mm - 40mm	24mm - 40mm	26mm - 30mm
System Features			
Single Colour	✓	✓	✓
Dual Colour	✓	✓	✓
Textured Finish	✓	✓	✓
Anodised Finish	✓	✓	✓
Thermally Broken	✓	✓	✓
Fire Exit option	✓	✓	✓
Part M compliant low threshold	✓	✓	-
Part M compliant closer	✓	✓	-
Anti-Finger Trap	✓	✓	-
Sightlines	145mm	176mm	55mm
Mid-Rail and Lay Bar	✓	✓	✓
Panel Door	✓	✓	-
Multi-Point Locking	✓	✓	-
Single Point Locking	✓	✓	-
Concealed Hinges	✓	✓	-
Barrel Hinges	x	x	-
Electro Mechanical Locking	✓	✓	-

SBD CONFIGURATIONS



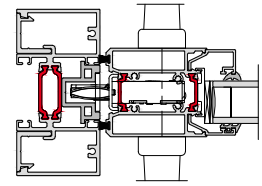
PAS 24 SECURITY RATED LOCK

AluK Part Ref	Single Door				Double Door			
	Min (w)	Min (h)	Max (w)	Max (h)	Min (w)	Min (h)	Max (w)	Max (h)
Electronic access locking	500	-	1200	2400	500	-	1200	2400
Panic Doors (Dorma)	500	-	1200	2400	500	-	1200	2400
Electronic access panic doors (Dorma)	500	-	1200	2400	500	-	1200	2400
Panic Doors (Sentinel)	500	1882*	1200	2400	Not available for Double Door			
Manual locking	500	1882*	1000	2400	500	1882*	1000	2400

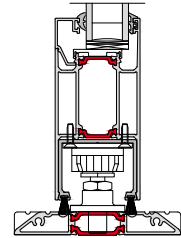
CAD CROSS SECTIONS AND THERMAL PROFILE

Additional details are available on request.

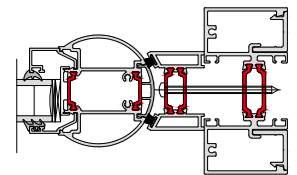
GT55 TB JAMB WITH MULTI POINT LOCK



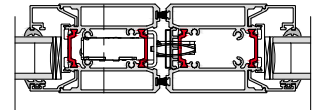
GT55 TB THRESHOLD



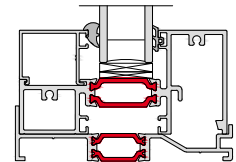
GT55 TB JAMB WITH ANTI FINGER TRAP



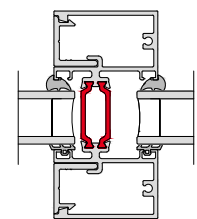
GT55 TB MEETING STYLE



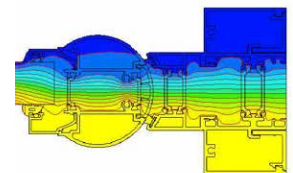
GT55 TB SCREEN CILL



GT55 TB SCREEN MULLION



GT55 TB THERMAL PROFILE





GT55 NI

Commercial Door



One of the most secure swing doors available on the market today, the GT55 NI has been specifically designed for high traffic environments where no insulation is required. This makes it a very robust and highly cost-effective choice when specifying applications such as shopping complexes and retail centres that require significant partitioning without the need for thermal insulation.

The GT55 NI is available in single colour options, with a choice of polyester powder coating and anodised finishes. A full range of security and customisable hardware is also available to suit the specific demands of your design.

DESIGN FEATURES

- › 110mm frame depth to accommodate varying types of applications
- › Slim 55mm frame profile for increased glass appearance
- › Ladder frame construction to enable easy on-site installation
- › Fully compatible with other AluK systems

OPTIONS

- › Can accommodate 6mm–28mm sealed units
- › Wide range of hardware available offering full customisation
- › Available in single colour polyester powder coating, texture and anodised finishes
- › Internal and external screen application available
- › Different threshold, document M compliant

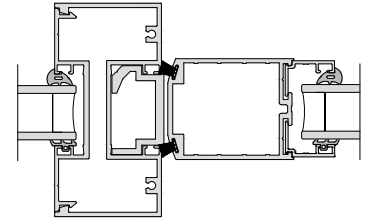
SPECIFICATIONS

Performance and accreditations	Single	Double	GT55 NI Screening
U-Value (Double Glazing) (Ug: 1.0 W/m²K)	3.6 W/m²K	3.0 W/m²K	2.0 W/m²K
U-Value (Triple Glazing) (Ug: 0.7 W/m²K)	3.4 W/m²K	2.8 W/m²K	1.7 W/m²K
Air Permeability	-	-	Class 4 (600 Pa)
Water Tightness	-	-	Class 8A (450 Pa)
Wind Resistance	-	-	Class 5 (2000 Pa)
Durability EN 1191 Category	50,000 Cycles	50,000 Cycles	-
System			
Depth	110mm	110mm	110mm
Size and weight limits			
Maximum Door Leaf Size (mm)	1250w x 2400h	2500w x 2400h	-
Maximum Door Leaf Weight	80kg	80kg	-
Glazing			
Glazing Thickness (Single Glazing)	6mm - 12mm	6mm - 12mm	6mm - 12mm
Glazing Thickness (Double Glazing)	24mm - 28mm	24mm - 28mm	24mm - 28mm
System Features			
Single Colour	✓	✓	✓
Dual Colour	x	x	x
Textured Finish	✓	✓	✓
Anodised Finish	✓	✓	✓
Fire Exit option	✓	✓	✓
Part M compliant low threshold	✓	✓	-
Anti-Finger Trap	✓	✓	-
Sightlines	144mm	176mm	55mm
Mid-Rail and Lay Bar	✓	✓	✓
Panel Door	✓	✓	-
Single Point Locking	✓	✓	-
Concealed Hinges	✓	✓	-
Barrel Hinges	-	-	-
Electro Mechanical Locking	✓	✓	-
Automatic Door	✓	✓	-

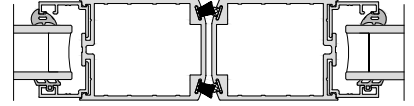
CAD CROSS SECTIONS AND THERMAL PROFILE

Additional details are available on request.

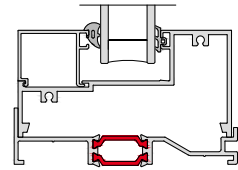
➤ GT55 NI JAMB LOCKING STYLE



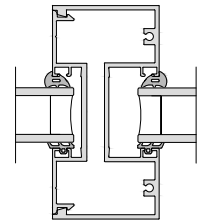
➤ GT55 NI MEETING STYLE



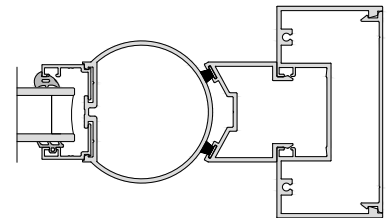
➤ GT55 NI SCREEN CILL



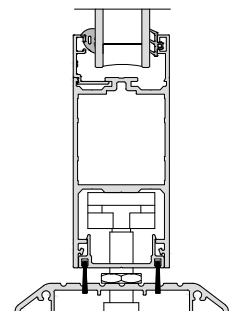
➤ GT55 NI SCREEN MULLION



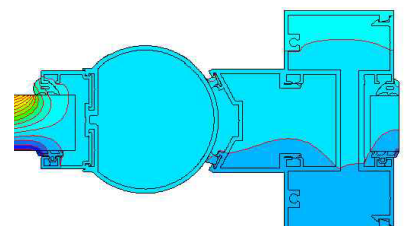
➤ GT55 NI JAMB ANTI FINGER TRAP



➤ GT55 NI LOW THRESHOLD



➤ GT55 NI THERMAL PROFILE





S140

Lift and Slide Door



Modern, versatile and customisable, the S140 Lift and Slide Door combines high performance with contemporary design to provide a reliable aluminium door system for almost any project. Manufactured to the highest UK standards, this multi-configuration system can achieve Thermal U-Values of $0.8W/m^2K$ (Triple glazed) and $1.2W/m^2K$ (Double glazed).

In addition to double and triple track options, a comprehensive range of colours and anodised finishes are available for the system.

DESIGN FEATURES

- › Doc L compliant U-values for refurbishment and new build properties
- › Slimline outer frame with flush frame-sash sight line
- › 2-part triple track profile for ease of fabrication and installation
- › Accepts 46mm - 48mm glazing
- › Max 420kg panel weight

OPTIONS

- › Multiple sliding configurations
- › Double and Triple Track options
- › Available in single, dual colour and anodised finishes
- › Range of hardware and security features
- › Dedicated Cill

SPECIFICATIONS

Performance* and accreditations	S140
U-Value Double Track 2500x2725mm (Double Glazing) 1.0 Ug	1.3 W/m ² K
U-Value Double Track 2500x2725mm (Triple Glazing) 0.5 Ug	0.9 W/m ² K
U-Value Double Track 4982x3100mm (Double Glazing) 1.0 Ug	1.2 W/m ² K
U-Value Double Track 4982x3100mm (Triple Glazing) 0.5 Ug	0.8 W/m ² K
Doorset Energy Ratings (DSER) - Double Glazing	C
Doorset Energy Ratings (DSER) - Triple Glazing	A+
Air Permeability (Pa)	Class 4 (600 Pa)
Water tightness (Pa)	Class E750 (750Pa)
Wind Resistance (Pa)	Class B2 (800 Pa)
System	
Depth	140 - 217.5mm
Configurations	
Double Track	✓
Triple Track	✓
Size and weight limits	
Max Outer Frame W x H: Double Track	4982mm x 3100mm*
Max Outer Frame W x H: Triple Track	6600mm x 3100mm*
Max Vent W x H: Double Track	2500mm x 3029mm*
Max Vent W x H: Triple Track	2257mm x 3029mm*
Max Vent Weight	420kg
Glazing	
Glazing Options	Internal
Glazing Thickness	46 - 48mm
Options	
Dedicated Cill	✓
System Features	
Single Colour	✓
Dual Colour	✓
Textured Finish	✓
Anodised Finish	✓
Multi-Point Locking	✓
Sightline (interlock)	89mm
Sightline (Cill)	117.6mm
Sightline (Head)	117.6mm
Sightline (Jamb)	117.6mm
Slim Interlock	44m

*Note: All maximum sizes should be checked against wind load and glass weights. Please contact Aluk's technical department for further assistance on sizes and limitations.

CONFIGURATIONS

DOUBLE TRACK



TRIPLE TRACK



KEY

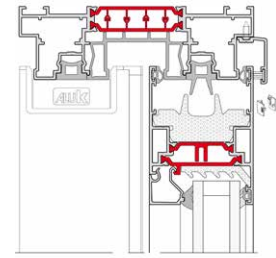


* Performance data based on extended CEN size for Building Regulations. For full test performance details please contact Technical Services. Aluk recommends checking all system performance for any scheme prior to use. The maximum height of 3136mm, DOES NOT consider wind loading or glass weights which would need to be checked on each door setup of this size, i.e., if the glass weight is greater than 420 Kg's or the wind load above the interlock inertia values required, the height of the door would need to be reduced to accommodate these limits.

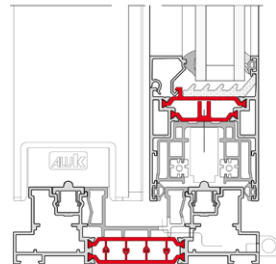
CROSS SECTIONS AND THERMAL PROFILE

Additional details are available on request.

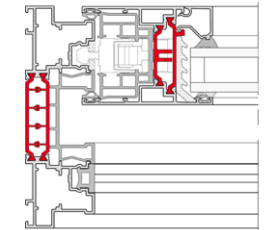
➤ S140 HEAD DETAIL



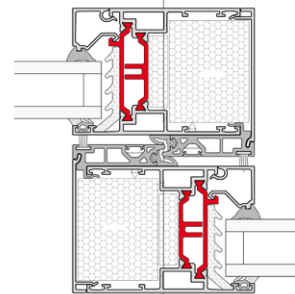
➤ S140 STANDARD THRESHOLD



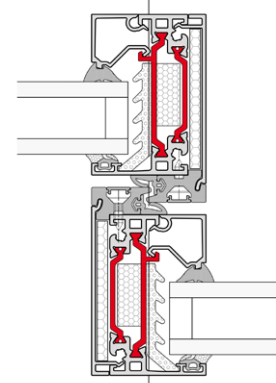
➤ S140 LOCKING JAMB



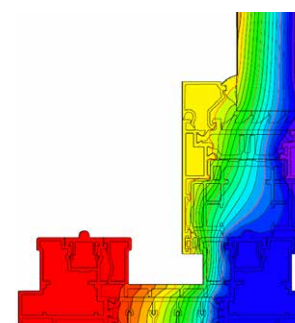
➤ S140 STANDARD INTERLOCK



➤ S140 SLIM INTERLOCK



➤ S140 THERMAL PROFILE





S67

Inline Sliding Door



Introducing the S67 Inline sliding door, a modern, versatile solution that seamlessly blends high performance with contemporary design. Engineered to meet the highest UK standards, this aluminium sliding door system offers reliability and flexibility for a wide range of renovation projects and new build. The S67 achieves 1.4 W/m²K U-value with double glazing.

Compatible with a multi-point lock and equipped with a low threshold, the S67 sliding door ensures security and comfort of use on all occasions.

DESIGN FEATURES

- › Mitre cut frame
- › Standard and reinforced interlock available
- › Glazing Gaskets available in Black
- › Low Threshold 22mm
- › Maximum weight per leaf of 200kg

OPTIONS

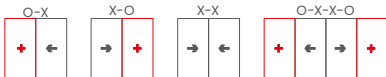
- › Glazing sizing range of 24mm - 32mm
- › Multipoint lock
- › Single or dual colour with textured or anodised finishes
- › 2 to 6 sash configurations available
- › Double and Triple track options available

SPECIFICATIONS

Performance and accreditations	S67
U-value (Double Glazing) ($U_g = 1.0 \text{ W/m}^2\text{K}$)	1.4 $\text{W/m}^2\text{K}$
Air Permeability	Class A4 (600Pa)
Water Tightness	Class 9A (600Pa)
Wind Resistance	Class B3 (1200Pa)
Acoustic	30-40 dB
System	
Depth	67 mm
Configurations	
Double Track	✓
Triple Track	✓
Size and weight limits	
Max Leaf Height	2700 mm
Max Leaf Width	3000 mm
Max Vent Weight	200 kg
Glazing	
Glazing Thickness	24 - 32 mm
System Features	
Single Colour	✓
Dual Colour	✓
Textured Finish	✓
Anodised Finish	✓
Multi-Point Locking	✓
Sightline Interlock	35mm
Sightline Cill	107.1mm
Sightline Head	107.1mm
Sightline Jamb	112.6mm

CONFIGURATIONS

DOUBLE TRACK



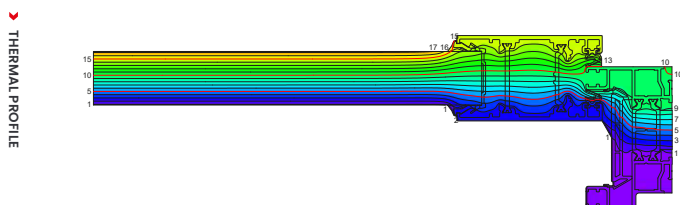
TRIPLE TRACK



KEY



THERMAL PROFILES

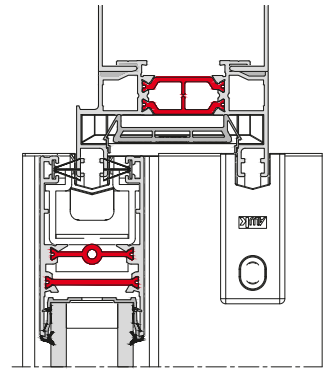


Performance data based on extended sizes for Building Regulations.
For full test performance details please contact Technical Services.
AluK recommends checking all system performance for any scheme prior to use.

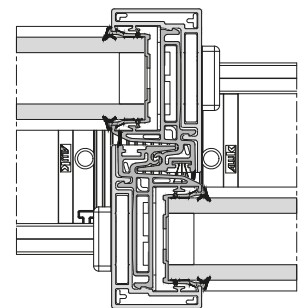
CAD CROSS SECTIONS AND THERMAL PROFILE

Additional details are available on request.

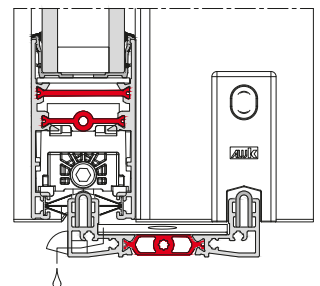
DOUBLE TRACK HEAD



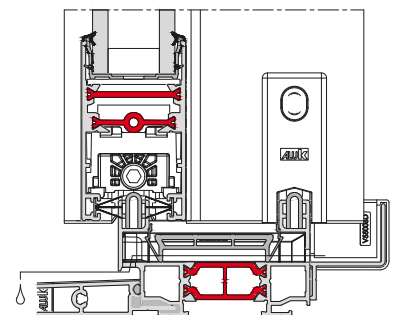
DOUBLE TRACK / TRIPLE TRACK INTERLOCK



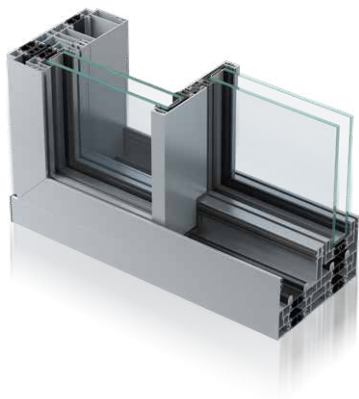
DOUBLE TRACK LOW THRESHOLD



DOUBLE TRACK CILL



Infinium Sliding Door



Infinium brings together indoor and outdoor living spaces in exquisite harmony.

Free-flowing spaces are created thanks to stunningly slim sightlines that bathe every surface with natural light. Uninterrupted panoramic landscapes provide complete escapism, without need of escape.

While seamlessly integrated floor-to-ceiling glazing reflects the clarity of thought behind every inspired design decision.

DESIGN FEATURES

- › Fully concealed outer-frame
- › 21mm central interlock
- › One or more opening panels with large width dimensions up to 3000mm and height dimensions up to 3500mm
- › Holds up to 400 kg panel weight

OPTIONS

- › Available in double or triple track
- › Glazing options of 38mm – 52mm
- › Floating corner post option for larger opening space
- › Single colour available as standard
- › Available in a range of configurations
- › Double or triple glazing solutions available on the same outer-frame

SPECIFICATIONS

Performance and accreditations

U-Value (Double Glazing)	1.3 W/m²K
U-Value (Triple Glazing)	< 1.0 W/m²K
Air Permeability	Class 4 (600 Pa)
Water Tightness	Class 8A (450 Pa)
Wind Resistance	Class C3 (1200 Pa up to 160 km/h)
Cycle Testing	25,000

System depth

Duo Rail	175mm
Tri Rail	267mm

Configurations

Opening	Inline Sliding
Dual Rail	✓
Tri Rail	✓

Size and weight limits

Max Sash Height	3500mm
Max Sash Width	3000mm
Max Sash Weight	400kg

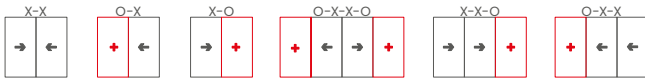
Glazing

Glazing Thickness	38mm-52mm
-------------------	-----------

System features

Single Colour	✓
Textured Finish	✓
Anodised Finish	✓
Multi-Point Locking	✓
Sightlines - Interlock	21mm

CONFIGURATIONS



90° Corner Post

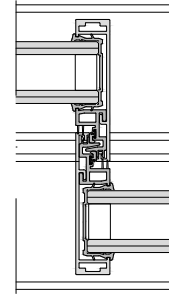
KEY



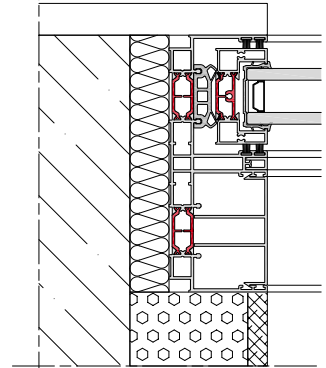
CAD CROSS SECTIONS AND THERMAL PROFILE

Additional details are available on request.

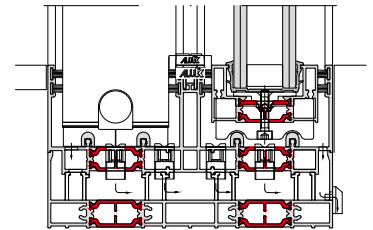
➤ INFINIUM INTERLOCK



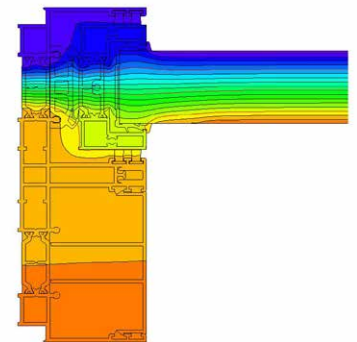
➤ INFINIUM JAMB DETAIL



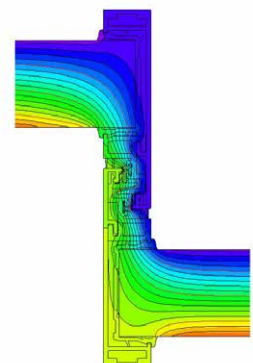
➤ INFINIUM CILL DETAIL



➤ INFINIUM THERMAL PROFILE



➤ INFINIUM THERMAL INTERLOCK





BSC94 HI

Inline Sliding Door



Modern, versatile and customisable, the BSC94 HI Inline Sliding Door combines high performance with contemporary design to provide a reliable aluminium door system for almost any architectural project. Manufactured to the highest UK standards, this multi-configuration system can achieve DSER of 'C' rating (double glazed) and sightlines of as little as 45mm.

In addition to dual colour options, a comprehensive range of colours and anodised finishes are available for the system. The BSC94 HI also features an anti bimetal low lambda strip to allow for varying expansion rates, ensuring the continued integrity of your design.

DESIGN FEATURES

- › Accepts 20mm – 31mm double glazing
- › Max 400kg panel weight
- › Certified under the Secured By Design scheme
- › Tested to PAS 24
- › Anti bimetal low lambda strip to allow for varying expansion rates

OPTIONS

- › Slimmer sightline of 45mm available
- › Multiple sliding configurations
- › Double track options
- › Available in single and dual colour
Anodised finishes also available
- › Range of hardware and security features

SPECIFICATIONS

Performance* and accreditations	BSC94 HI	BSC94 SLIM HI
2500mm x 2180mm (Double Glazing) 1.0Uc	1.63 W/m ² K	1.67 W/m ² K
3800mm x 2450mm (Double Glazing) 1.0Uc	1.4 W/m ² K	1.4 W/m ² K
DSER	'C' Rating	'C' Rating
BRE Green Guide Rating	C Rated	C Rated
Air Permeability	Class 4 (600 Pa)	Class 3 (600 Pa)
Water Tightness	Class 6a (250 Pa)	Class 4a (150 Pa)
Wind Resistance	C3 (1200 Pa)	C3 (1200 Pa)
Acoustic Performance	Rw (C;Ctr) 36 (-1;-3) dB**	-
Security	PAS 24 & SBD	x
System		
Depth	94mm-155mm	94mm-155mm
Configurations		
Opening	Inline Sliding	Inline Sliding
Double Track	✓	✓
Size and weight limits		
Max Frame Height	3000mm	3000mm
Max Vent Width	2000mm	2000mm
Max Frame Height With Security Features	2600mm	x
Max Vent Weight	400kg	400kg
Glazing		
Glazing Options	Internal	Internal
Glazing Thickness	20mm-31mm	20mm-31mm
System Features		
Single Colour	✓	✓
Dual Colour	✓	✓
Textured Finish	✓	✓
Anodised Finish	✓	✓
Multi-Point Locking	✓	✓
Sightlines (Interlock)	85mm	45mm
Sightlines (Cill)	115.5mm	115.5mm
Sightlines (Head)	115.5mm	115.5mm
Sightlines (Jamb)	115.5mm	115.5mm

CONFIGURATIONS

DOUBLE TRACK



KEY

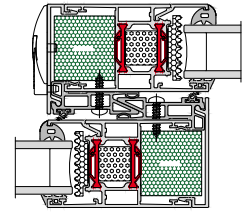


* Performance data based on CEN size for Building Regulations. For full test performance details please contact Technical Services. AluK recommends checking all system performance for any scheme prior to use.

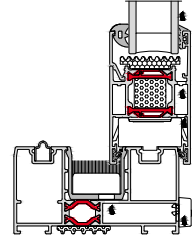
CAD CROSS SECTIONS AND THERMAL PROFILE

Additional details are available on request.

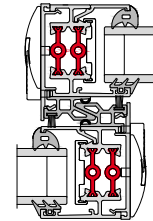
➤ BSC94 HI DOUBLE TRACK STANDARD INTERLOCK



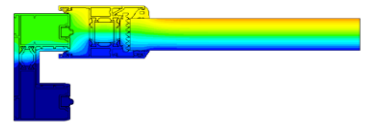
➤ BSC94 HI DOUBLE TRACK CILL



➤ BSC94 HI DOUBLE TRACK STANDARD SLIMLINE INTERLOCK



➤ BSC94 HI THERMAL PROFILE



BSC94

Lift & Slide Door



For those looking for effortless operation, look no further than our premium lift and slide door. Its vital statistics are impossible to ignore. Thermal U-Values of 1.5W/m²K (triple glazed). Panel weights of up to 400Kg. Sightlines as little as 45mm.

The list goes on. As do the benefits, including multiple configurations and a wide choice of colour finishes.

DESIGN FEATURES

- › Accepts 20mm – 31mm double glazing
- › Max 400kg panel weight (double bogey)

OPTIONS

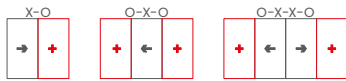
- › Available in an Inline Sliding Option
- › Slimmer sightline of 45mm available
- › Multiple sliding configurations
- › Mono or Dual rail options
- › Available in single and dual colour
Anodised finishes also available
- › Range of hardware
- › Night vent position for air flow

SPECIFICATIONS

Performance and accreditations	BSC94	BSC94 SLIM
U-Value (Double Glazing) ($U_g = 1.0 \text{ W/m}^2\text{K}$) (Mono Rail)	1.7 $\text{W/m}^2\text{K}$	-
U-Value (Triple Glazing) ($U_g = 0.7 \text{ W/m}^2\text{K}$) (Mono Rail)	1.5 $\text{W/m}^2\text{K}$	-
U-Value (Double Glazing) ($U_g = 1.0 \text{ W/m}^2\text{K}$) (Dual Rail)	1.9 $\text{W/m}^2\text{K}$	1.9 $\text{W/m}^2\text{K}$
U-Value (Triple Glazing) ($U_g = 0.7 \text{ W/m}^2\text{K}$) (Dual Rail)	1.7 $\text{W/m}^2\text{K}$	1.7 $\text{W/m}^2\text{K}$
Air Permeability	Class 4 (600 Pa)	Class 4 (600 Pa)
Water Tightness	Class A9 (E900A)	Class A9 (E900A)
Wind Resistance	C3 (1200 Pa)	C3 (1200 Pa)
Acoustic Performance	-	-
System		
Depth	94mm-155mm	94mm-155mm
Configurations		
Opening	Lift & Slide	Lift & Slide
Mono Rail	✓	x
Dual Rail	✓	✓
Size and weight limits		
Max Frame Height	3000mm	3000mm
Max Vent Width	2000mm	2000mm
Max Vent Weight	400kg	400kg
Glazing		
Glazing Options	Internal	Internal
Glazing Thickness	20mm-31mm	20mm-31mm
System Features		
Single Colour	✓	✓
Dual Colour	✓	✓
Textured Finish	✓	✓
Anodised Finish	✓	✓
Multi-Point Locking	✓	✓
Sightlines (Interlock)	100mm	45mm
Sightlines (Cill)	130.5mm	130.5mm
Sightlines (Head)	130.5mm	130.5mm
Sightlines (Jamb)	130.5mm	130.5mm

CONFIGURATIONS

MONO RAIL



DUAL RAIL



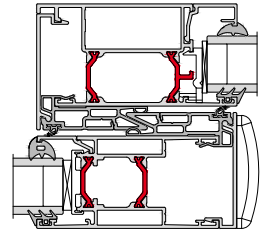
KEY



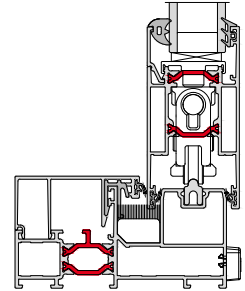
CAD CROSS SECTIONS AND THERMAL PROFILE

Additional details are available on request.

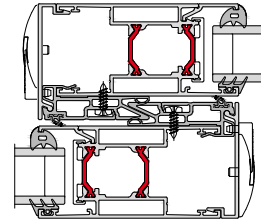
➤ BSC94 MONO RAIL
STANDARD INTERLOCK



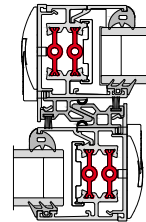
➤ BSC94 MONO RAIL CILL



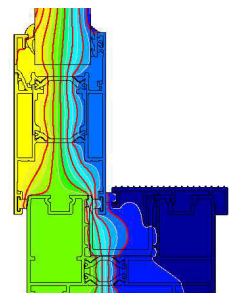
➤ BSC94 DUAL RAIL
STANDARD INTERLOCK



➤ BSC94 DUAL RAIL
STANDARD SLIMLINE INTERLOCK



➤ BSC94 THERMAL PROFILE



ICONIK (F80)

Bifold Door System



The Iconik bifold door system has been engineered to streamline fabrication, simplify stockholding, and accelerate installation without compromising on performance. With slim 87mm interlocks and U-values as low as 1.2 (double glazed single & double door) achieved through advanced seals. Iconik delivers maximum efficiency alongside a modern aesthetic.

Designed for flexibility, the same outerframe and components are used across bifold, single, and double door configurations - requiring only a sash change, one lock, and common cleats across sash and frame mean fewer parts to manage and reduced stockholding.

On-site, Iconik is faster to fit thanks to a 2mm tolerance that removes the need for final panel measurement, while the Quik Clip Bead secures in seconds. The result: a high-performance system that saves time in production, reduces stock complexity, and speeds up every stage of installation. Other key design features include the 110mm mid rail, which allows the creation of transoms with the standard sash.

DESIGN FEATURES

- › Non-Handed Lock and Keep – easier fabrication and installation
- › Optional Shootbolt Locking for larger openings
- › Slim Hinges and Rollers – modern, elegant design
- › High-Capacity Rollers – 130 kg per panel, smooth operation
- › Half-Roller Design – no floating mullion, cleaner appearance

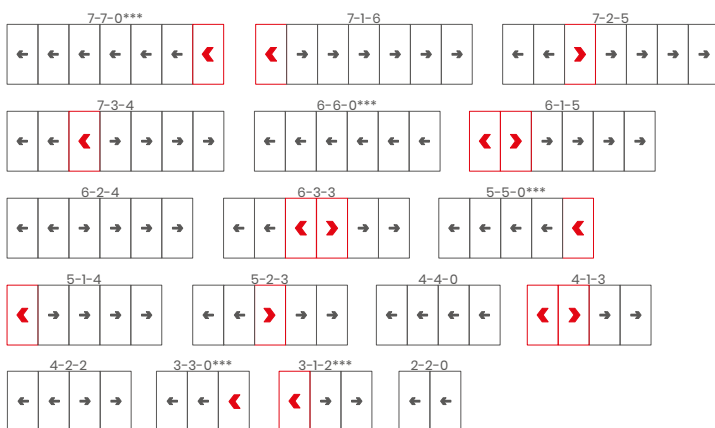
OPTIONS

- › Shootbolt Hardware – for added security
- › Taller Door Capability – for larger openings
- › Thermal Insulation – plastic isolators and glazing foam
- › HI & Standard Insulation Variants – to meet performance needs

SPECIFICATIONS

Performance* and accreditations	F80 SLIM BIFOLD	F80 STANDARD BIFOLD	F80 STANDARD SINGLE DOOR	F80 STANDARD DOUBLE DOOR
U-Value (Double Glazing) (Ug: 1.0 W/m²K)	1.3 W/m²K	1.3 W/m²K	1.2 W/m²K	1.2 W/m²K
U-Value (Triple Glazing) (Ug: 0.7 W/m²K)	1.0 W/m²K	1.0 W/m²K	0.9 W/m²K	0.9 W/m²K
Air Permeability (Standard Threshold)	Class 4 (300 Pa)	Class 4 (600 Pa)	Class 3 (600 Pa)	Class 3 (600 Pa)
Water Tightness (Standard Threshold)*	Class 5a (200 Pa)	Class 5a (200 Pa)	Class 5a (200 Pa)	Class 5a (200 Pa)
Wind Resistance	Class C3 (1200 Pa)	Class C3 (1200 Pa)	Class C3 (1200 Pa)	Class C3 (1200 Pa)
Security	PAS 24	PAS 24	PAS 24	PAS 24
Cycle Testing Primary Leaf BS 6375	50,000	50,000	-	50,000
Secondary Leaf (10% of Primary) BS 6375-2	5,000	5,000	5,000	5,000
System				
Depth	80mm	80mm	80mm	80mm
Configurations				
Opening	Open-In & Open-Out	Open-In & Open-Out	Open-In & Open-Out	Open-In & Open-Out
Size and weight limits				
Max Leaf Height	2400mm std / 3000mm**	2400mm std / 3000mm**	2400mm std	2400mm std
Max Leaf Width	1200mm	1200mm	1200mm	1200mm
Max Vent Weight	130kg	130kg	130kg	130kg
Glazing				
Glazing Options	Clip Bead	Clip Bead	Clip Bead	Clip Bead
Glazing Thickness	24mm-46mm	24mm-46mm	24mm-46mm	24mm-46mm
System Features				
Single Colour	✓	✓	✓	✓
Dual Colour	✓	✓	✓	✓
Textured Finish	✓	✓	✓	✓
Anodised Finish	✓	✓	✓	✓
Multi-Point Locking	✓	✓	✓	✓
Sightline (Head)	80mm	92mm	92mm	92mm
Sightline (Cill)	91mm	92mm	92mm	-
Sightline (Jamb)	80mm	92mm	92mm	92mm
Sightline (Interlock)	87mm	110mm	-	-
Sightline (Midrail)	-	110mm	110mm	110mm

CONFIGURATIONS



***Opposite handing available on all configurations. For more options, refer to the Technical Manual.

KEY



OTHER OPTIONS AVAILABLE

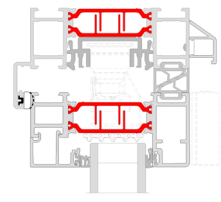


*Results are based on open in door type.

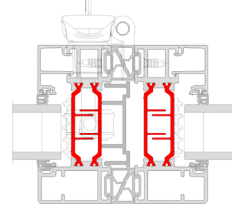
** Please refer to size limits and span charts for specific configuration limitations. *Results are based on open in door type.

CAD CROSS SECTIONS AND THERMAL PROFILE

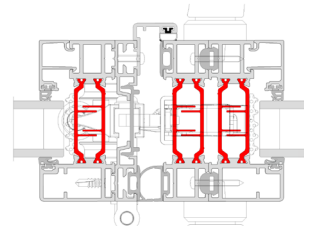
Additional details are available on request.



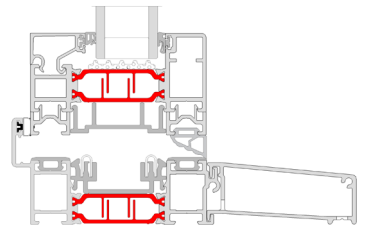
➤ F80 SLIM HEAD



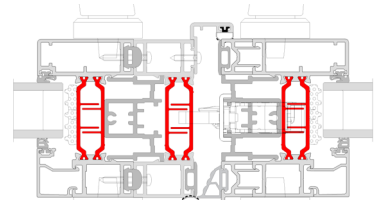
➤ F80 SLIM INTERLOCK



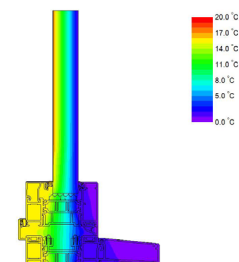
➤ F80 SLIM INTERLOCK - HALF ROLLER



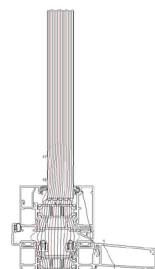
➤ F80 SLIM CILL



➤ F80 STANDARD FRENCH DOOR



➤ F80 THERMAL PROFILE



➤ F80 ISOTHERM

BSF70 HI Bifold Door System



The BSF70 HI Folding Door System gives maximum control over the style and operation of the doors. Multiple panels can be added to accommodate the unique design specifications of the building, with the option to open-in or out as required. The system's narrow profile ensures that maximum glazing is achieved, flooding spaces with natural light.

In addition to the inherent strength of aluminium, the BSF70 HI combines security hinges and locking mechanisms with a unique heavy-duty roller design to provide the security and reliability demanded in high traffic applications. The system also incorporates a pop out T-handle design that allows for square flush stacking panels when doors are fully open.

DESIGN FEATURES

- › Internally beaded with a softline or square detail to all external doors and panels
- › Four stainless steel wheels ensures smooth and consistent operation
- › Unique, flush line pop out T-handle that allows maximum door opening and square stacking of panels
- › Tested to PAS 24 and certified under the Secured By Design scheme
- › Integrated frame cill available
- › Adjustable rollers
- › Folding corner option for open-out

OPTIONS

- › Standard adjustable rollers and heavy duty rollers
- › Integrated Cill
- › Chamfered and square bead options
- › Low threshold option that can be configured to achieve DDA and Part M compliance
- › Doors and panels can be used in a variety of configurations, style and design
- › All configurations are available in both open-in and open-out options
- › Full range of bespoke hardware available
- › Lift & Turn handle or pop out T-handle available
- › Glazing sizing range of 24mm-40mm
- › Available in single or dual colour polyester powder coating, texture and anodised finishes
- › **QUIKCLIP™** bead available with 28mm glazing

SPECIFICATIONS

Performance and accreditations	BSF70 HI	BSF70 HD HI
U-Value (Double Glazing) (Ug: 1.0 W/m²K)	1.4 W/m²K	1.4 W/m²K
U-Value (Triple Glazing) (Ug: 0.7 W/m²K)	1.1 W/m²K	1.1 W/m²K
Air Permeability (Standard Threshold)	Class 4 (600 Pa)	Class 4 (600 Pa)
Water Tightness (Standard Threshold)	Class 9a (600 Pa)	Class 9a (600 Pa)
Wind Resistance	Class AE2400 (2400 Pa)	Class AE2400 (2400 Pa)
Security	PAS 24 & SBD	PAS 24 & SBD
Cycle Testing	50,000	50,000
3rd Party Certification Q-Mark	✓	✓

System

System	BSF70 HI	BSF70 HD HI
Depth	70mm	70mm

Configurations

Configurations	BSF70 HI	BSF70 HD HI
Opening	Open-In & Open-Out	Open-In & Open-Out

Size and weight limits

Size and weight limits	BSF70 HI	BSF70 HD HI
Max Leaf Height	2400mm std/3000**mm	2400mm std/3000**mm
Max Leaf Width	1200mm	1200mm
Max Vent Weight	100kg	130kg

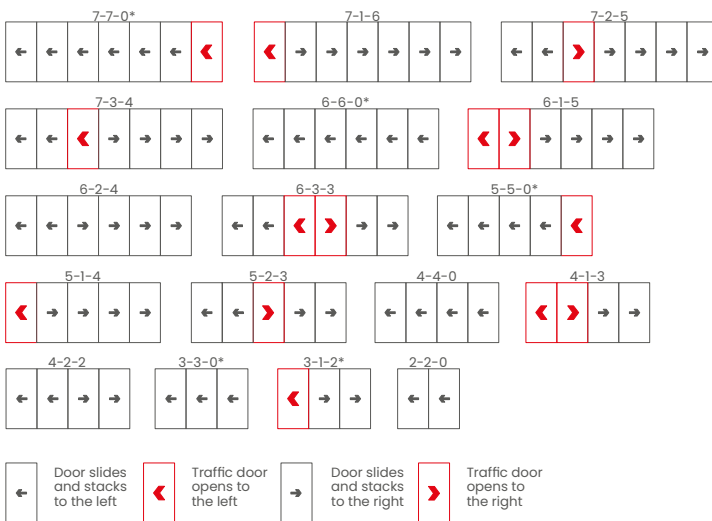
Glazing

Glazing	BSF70 HI	BSF70 HD HI
Glazing Options	Internal Bead	Internal Bead
Glazing Thickness	24mm-40mm	24mm-40mm

System Features

System Features	BSF70 HI	BSF70 HD HI
Low Threshold	✓	✓
QuiK Clip bead	✓	✓
Single Colour	✓	✓
Dual Colour	✓	✓
Textured Finish	✓	✓
Anodised Finish	✓	✓
Multi-Point Locking	✓	✓
Sightline (Head)	110mm	110mm
Sightline (Cill)	130mm	130mm
Sightline (Jamb)	110mm	110mm
Sightline (Meeting Stile)	140mm	140mm

CONFIGURATIONS



OTHER OPTIONS AVAILABLE



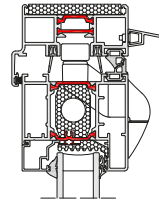
*Opposite handling available on all configurations. For more options, refer to the Technical Manual.

**The maximum height and panel width for the BSF70 HI Folding Sliding Door System are co-dependent and dictated by hardware limitation and the design wind load where the doors are being installed. Based on the site design wind load that the doors are subjected to this will influence the maximum height and width [per panel] to which the doors can be manufactured.

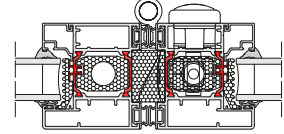
CAD CROSS SECTIONS AND THERMAL PROFILE

Additional details are available on request.

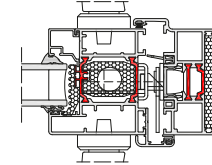
BSF70 HI HEAD



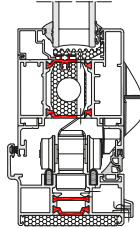
BSF70 HI INTERLOCK



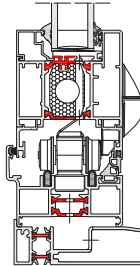
BSF70 HI LOCKING JAMB



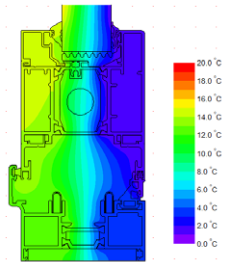
BSF70 HI CILL



BSF70 HI SUBCILL



BSF70 HI THERMAL PROFILE



T: 01291 639 739
E: info.uk@aluk.com

Registered Office:

AluK (GB) Ltd
Newhouse Farm Ind Est
Chepstow
NP16 6UD

London Office:

AluK Design Studio
5-11 Worship Street
London
EC2A 2BH

Registered Number:
02881320